

# TRIUMPH LARGE FLIP

## TABLES

The Triumph Large Flip table builds upon the Triumph table offerings to include flip top boxes for larger square or rectangle tables. These tables are the perfect, timeless addition to cafeterias, dining halls, or meeting spaces where you need to seat a large number of people but also have the flexibility to roll away and save space.



**TO ORDER, PLEASE SPECIFY:**

- 1. Model Number
- 2. Quantity
- 3. Top Style & Shape
- 4. Top Finish & Grain Direction
- 5. Edge Finish
- 6. Base Finish
- 7. Upgrade Options

**EXAMPLE:**

TRF6060 | 5 | 1003 Square | Walnut Heights long  
| Walnut Heights | Proulx White | PC

This would signify an order of five Triumph Large Flip tables that are 36" W x 36" L Square with a Walnut Heights laminate top, Walnut Heights 3mm edge, Proulx White powder coat for the base, and a power cutout.

## ABOUT TRIUMPH LARGE FLIP

The Triumph Large Flip table includes a base with 2" diameter columns and feet with hard locking swivel casters. The tops are available in laminate and veneer only and are constructed with high-quality, commercial grade plywoods and HPL laminates and veneers.

### 1. MODEL #

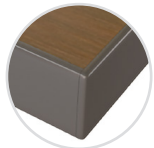
Find the Model # in the pricing matrix found on page 3 which dictates shape and size of the booth selection.

### 2. QUANTITY

SurfaceTech has state-of-the-art manufacturing capabilities to produce and create furniture in small quantity up to mass-scale quantities.

### 3. TOP STYLE & SHAPE

Select a top style by indicating with the number below.



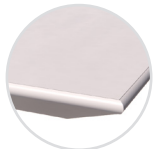
#### 1003 - 3mm Laminate

1-1/4" high density PB core with high pressure laminate surface, 3mm edge with a phenolic backer sheet on the underneath side



#### 1001 - Self Laminate

1-1/4" high density PB core with high pressure laminate surface, self edge in laminate with a phenolic backer balance sheet on the underneath side.



#### 1901 - Knife Bottom Bevel PVC 3mm Edge Laminate

1-1/4" MDF core with high pressure laminate surface, 3mm edge with painted bottom bevel and on the underneath side.



#### 1104 - T-Mold Laminate

1-1/4" high density PB core with high pressure flush laminate surface, with 1-1/4" hard rubber t-mold edge and a phenolic backer balance sheet on the underneath side.



#### 3008 - 3mm Wood Edge Veneer

1-1/4" high density PB core with veneer surface, 3mm thick x 1-1/4" wood lumber band edge and a phenolic backer balance sheet on the underneath side. Comes standard in maple species with standard stain option.

Triumph Large Flip comes standard in a round or square shape.



+0%



+0%

Tops 72" Sq/Dia are in two pieces for all finishes. Sizes 60" Dia and 60" Sq are in two pieces as well for top style 3008. All include tite joint fasteners.

### 4. TOP FINISH & GRAIN DIRECTION

According to the top style selected in Step 3, please indicate the finish selected. Pricing includes Grade 1 selections. Below you can find the upgrade charge to select a different grade per finish type.

#### Laminate Grades

Apply % to 1003

Gr. 1..... Included

Gr. 2..... Add 3%

Gr. 3..... Add 6%

Gr. 4..... Add 9%

Gr. 5..... Add 28%

Gr. 6..... Add 37%

#### Selection Options

To view current selection options by grade, please visit the resources page of our website at: [www.surface-tech.com/resources](http://www.surface-tech.com/resources)

#### Veneer & Wood Tops

Maple species with standard stain options are included in the price. If a non-maple species is needed, please call for pricing.

#### Grain Direction

Tops come standard with a grain direction going the long length of the table. Please call for pricing, if you want the grain to be ran along the short direction as that will require additional materials.



Long Direction



Short Direction

### 5. EDGE FINISH & TOP DETAILS

Depending on the Top Style selected in Step 3, an edge finish may need to be selected. 3mm PVC edge banding and T-Mold edges are priced as standard options from our resource sheet only. Any other requests for different color options, would need to be quoted as a custom. Applicable finish options can be viewed at [www.surface-tech.com/resources](http://www.surface-tech.com/resources)

### 6. BASE FINISH

Powder Coat is standard for the base and Grade 3 is included in the pricelist.

#### Powder Coat Grades

Apply % to 1003

Gr. 3..... Included

Gr. 4..... Add 2%

Gr. 5..... Add 3%

Gr. 6..... Add 4%

Gr. 7..... Add 8%

### 7. UPGRADE OPTIONS

(G) Table Top Grommet.....Add \$90  
available in black with 3-1/8" diameter

(PC) Power Cutout.....Add \$65 ea.  
price per cutout

(GR) Grommet Holes.....Add \$95  
2x in one column; 34" span base only

(WB) Wire Channel w/Management Box.....Add \$475  
Holes in one column, steel box,  
matching powder coat, 38" span base only

Custom Stain .....Add 15%  
Apply percentages to 1003 price.

(RC) Rounded Corners.....Add \$20 per corner  
3" Radius; Standard on top 1104.

Call for custom pricing on these upgrade options:  
Veneer - Non-Maple Species:

### OTHER INFO

Upgrade percentages are applied to the laminate top price and do not compound if there are multiple upgrades selected.

Flip-Top boxes are 1-3/4"H x 8-9/16"W x 9-5/8"D.

## TRIUMPH LARGE FLIP

Product Number	Size (1 Base)	Features	Top Shape/Size	Top Style				
				1003	1001	1901	1104	3008
				Top: Lam	Lam	Lam	Lam	Veneer
Edge: 3mm	Self	Knife/Painted	T-Mold	3mm Wd				
TRF60	38" x 38" Spread, 2" Dia Columns/Feet, 27-3/4"H	Steel, (1x) Flip-Top Box, (4x) Columns, Cross Base, Casters	Round: 60" Dia	\$6,480	\$6,336	\$7,284	\$6,467	\$8,450
TRF6060	38" x 38" Spread, 2" Dia Columns/Feet, 27-3/4"H	Steel, (1x) Flip-Top Box, (4x) Columns, Cross Base, Casters	Square: 60"W X 60"L	\$6,368	\$6,223	\$7,171	\$6,356	\$8,387
TRF72	34" Spread, 2" Dia Columns/Feet, 29" OA Depth, 27-3/4"H	Steel Split Flip, (4x) Flip-Top Boxes, (4x) Columns w/(2x) Double T-Legs, Cross Bars, (2x) Connector Rods, Casters	Round: 72" Dia (Two Piece)	\$9,198	\$8,687	\$10,912	\$9,176	\$10,580
TRF7272	34" Spead, 2" Dia Columns/Feet, 29" OA Depth, 27-3/4"H	Steel Split Flip, (4x) Flip-Top Boxes, (4x) Columns w/(2x) Double T-Legs, Cross Bars, (2x) Connector Rods, Casters	Square: 72"W x 72"L (Two Piece)	\$9,121	\$8,612	\$10,858	\$9,100	\$10,523