



MOD-X

TABLES

MOD-X Occasional tables offer a contemporary and modern design crafted with high-quality steel arranged in an X-shaped base. This table seamlessly blends form and function making it a focal point in any space. Its durable construction ensures longevity while maintaining elegance and sophistication.



TO ORDER, PLEASE SPECIFY:

- 1. Model Number
- 2. Quantity
- 3. Top Style & Shape
- 4. Top Finish & Grain Direction
- 5. Edge Finish
- 6. Base Finish
- 7. Upgrade Options

EXAMPLE:

MX3030 | 5 | 1003 Square | Walnut Heights long
| Walnut Heights | Proulx White | PC

This would signify an order of five Mod-X tables that are 30" W x 30" L squares with a Walnut Heights laminate top, Walnut Heights 3mm edge, Proulx white for the base, and power cutout

ABOUT MOD-X

Mod-X includes a base that consists of 2" x 1" 14GA steel tubing arranged to make an X-shape on the floor. The base also includes adjustable levelers. Constructed with high-quality, commercial grade plywoods and HPL laminates and veneers. Corian and Quartz include 1-1/8" thick MDF bottom painted knife edge substrate.

1. MODEL

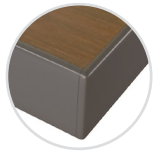
Find the Model # in the pricing matrix found on page 4 which dictates shape and size of the booth selection.

2. QUANTITY

SurfaceTech has state-of-the-art manufacturing capabilities to produce and create furniture in small quantity up to mass-scale quantities.

3. TOP STYLE & SHAPE

Select a top style by indicating with the number below.



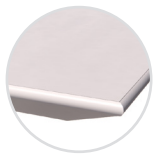
1003 - 3mm Laminate

1-1/4" high density PB core with high pressure laminate surface, 3mm edge with a phenolic backer sheet on the underneath side



1001 - Self Laminate

1-1/4" high density PB core with high pressure laminate surface, self edge in laminate with a phenolic backer balance sheet on the underneath side.



1901 - Knife Bottom Bevel PVC 3mm Edge Laminate

1-1/4" MDF core with high pressure laminate surface, 3mm edge with painted bottom bevel and on the underneath side.



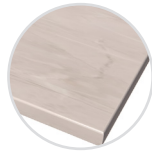
3008 - 3mm Wood Edge Veneer

1-1/4" high density PB core with veneer surface, 3mm thick x 1-1/4" wood lumber band edge and a phenolic backer balance sheet on the underneath side. Comes standard in maple species with standard stain option.



5121 - Solid Wood

1-3/4" thick solid wood plank top with eased edge. Plank size random with maximum board width of 2-1/2". Comes standard in maple species with standard stain option.



7021 - Corian Solid Surface

1/2" thick corian solid surface with an eased edge on top of a 1-1/8" thick MDF bottom painted knife edge substrate.



9021 - Quartz

2cm thick quartz with an eased edge on top of a 1-1/8" thick MDF bottom painted knife edge substrate.

Mod-X comes standard in a round, oval, or square shape.



+0% to price.

4. TOP FINISH & GRAIN DIRECTION

According to the top style selected in Step 3, please indicate the finish selected. Pricing includes Grade 1 selections. Below you can find the upgrade charge to select a different grade per finish type.

Laminate Grades

Apply % to 1003
Gr. 1..... Included
Gr. 2..... Add 4%
Gr. 3..... Add 7%
Gr. 4..... Add 11%
Gr. 5..... Add 33%
Gr. 6..... Add 44%

Corian Solid Surface Grades

Apply % to 7021
Gr. 2..... Included
Gr. 3..... Add 7%
Gr. 4..... Add 21%
Gr. 6..... Add 48%
Gr. 7..... Add 61%

Quartz Grades

Apply % to 9021
Gr. 1..... Included
Gr. 2..... Add 7%
Gr. 3..... Add 14%
Gr. 4..... Add 20%

Selection Options

To view current selection options by grade, please visit the resources page of our website at: www.surfacetech.com/resources

Corian Solid Surface [Top 7021] pricing is based on Surfacetech preferred choice options. For non-preferred options, please call for quote.

Veneer & Wood Tops

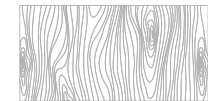
Maple species with standard stain options are included in the price. If a non-maple species is needed, please call for pricing.

Grain Direction

Tops come standard with a grain direction going the long length of the table. Please call for pricing, if you want the grain to be ran along the short direction as that will require additional materials.



Long Direction



Short Direction

5. EDGE FINISH & TOP DETAILS

Depending on the Top Style selected in Step 3, an edge finish may need to be selected. 3MM and T-Mold edges are priced as standard options from our resource sheet only. Any other requests for different color options, would need to be quoted as a custom. Applicable finish options can be viewed at www.surfacetech.com/resources

6. BASE FINISH

Bases are welded steel with powder coat finish and the standard is Grade 3, included in the pricelist.

Powder Coat Grades

Apply % to 1003
Gr. 3..... Included
Gr. 4..... Add 3%
Gr. 5..... Add 5%
Gr. 6..... Add 7%
Gr. 7..... Add 12%

7. UPGRADE OPTIONS

(PC) Power Cutout.....Add \$65 ea.
price per cutout, excludes quartz

(PQ) Power Cutout Quartz.....Add \$565
price per cutout

(WMC) Wire Management Clips:.....Add \$60
black

(RC) Rounded Corners.....Add \$20 per corner
3" Radius; Standard on top 1104

Custom Wood Stain:.....Add 15%
Apply percentages to 1003 Top price

Call for custom pricing on these upgrade options:

(GT) Glass Top
Veneer - Non-Maple Species

OTHER INFO

Upgrade percentages are applied to the 1003 price and do not compound if there are multiple upgrades selected.



MOD-X

Product Number	Size (1 Base)	Features	Top Shape/Size	Top Style							
				1003	1001	1901	3008	5121	7021**	9021**	
				Top: Lam	Lam	Lam	Veneer	Solid Wood	Corian	Corian Quartz	
Edge: 3mm	Self	Knife/ Painted	3mm Wd	Solid Wood	Corian	Corian Quartz					
Square Top											
MX3030	30" Spread, 16"H	(4x) Steel Legs w/ Floor Crossbars, (4x) Top Plates	Square: 30" x 30"	\$2,352	\$2,302	\$2,763	\$2,979	\$3,165	\$3,998	\$4,881	
MX3636	30" Spread, 16"H	(4x) Steel Legs w/ Floor Crossbars, (4x) Top Plates	Square: 36" x 36"	\$2,410	\$2,350	\$2,968	\$3,048	\$3,623	\$4,415	\$6,137	
MX4242	30" Spread, 16"H	(4x) Steel Legs w/ Floor Crossbars, (4x) Top Plates	Square: 42" x 42"	\$2,443	\$2,371	\$3,029	\$3,075	\$4,706	\$6,524	N/A	
Round Top											
MX36	30" Spread, 16"H	(4x) Steel Legs w/ Floor Crossbars, (4x) Top Plates	Round: 36" Dia	\$2,464	\$2,442	\$3,027	\$3,109	\$3,662	\$4,509	\$6,215	
MX42	30" Spread, 16"H	(4x) Steel Legs w/ Floor Crossbars, (4x) Top Plates	Round: 42" Dia	\$2,497	\$2,463	\$3,088	\$3,140	\$4,189	\$2,586	N/A	
MX48	30" Spread, 16"H	(4x) Steel Legs w/ Floor Crossbars, (4x) Top Plates	Round: 48" Dia	\$2,525	\$2,483	\$3,145	\$3,171	\$5,616	\$4,714	N/A	