

# MAUVILLA

## TABLES



Mauvilla is an occasional table with a classic style and straight metal legs. Customize it with a top of your choice.



**TO ORDER, PLEASE SPECIFY:**

- 1. Model Number
- 2. Quantity
- 3. Top Style & Shape
- 4. Top Finish & Grain Direction
- 5. Edge Finish
- 6. Base Finish
- 7. Upgrade Options

**EXAMPLE:**

MU1212 | 5 | 1003 Square | Walnut Heights long  
| Walnut Heights | Proulx White

This would signify an order of five Mauvilla tables that are 12" W x 12" L square with a Walnut Heights laminate top, Walnut Heights 3mm edge, and Proulx White powder coat for the base.

## ABOUT MAUVILLA

Mauvilla includes a base consisting of steel legs & frame made of 1" wide by 1/2" thick A36 flat bar steel. The base also includes adjustable levelers. The top is constructed with high-quality, commercial grade plywoods and HPL laminates and veneers. Corian and Quartz include 1-1/8" thick MDF bottom-painted, knife-edge, substrate.

### 1. MODEL #

Find the Model # in the pricing matrix found on page 4 which dictates shape and size of the booth selection.

### 2. QUANTITY

SurfaceTech has state-of-the-art manufacturing capabilities to produce and create furniture in small quantity up to mass-scale quantities.

### 3. TOP STYLE & SHAPE

Select a top style by indicating with the number below.



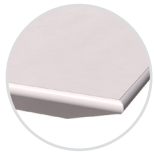
#### 1003 - 3mm Laminate

1-1/4" high density PB core with high pressure laminate surface, 3mm edge with a phenolic backer sheet on the underneath side



#### 1001 - Self Laminate

1-1/4" high density PB core with high pressure laminate surface, self edge in laminate with a phenolic backer balance sheet on the underneath side.



#### 1901 - Knife Bottom Bevel PVC 3mm Edge Laminate

1-1/4" MDF core with high pressure laminate surface, 3mm edge with painted bottom bevel and on the underneath side.



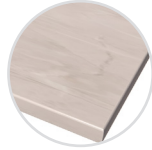
#### 3008 - 3mm Wood Edge Veneer

1-1/4" high density PB core with veneer surface, 3mm thick x 1-1/4" wood lumber band edge and a phenolic backer balance sheet on the underneath side. Comes standard in maple species with standard stain option.



#### 5121 - Solid Wood

1-3/4" thick solid wood plank top with eased edge. Plank size random with maximum board width of 2-1/2". Comes standard in maple species with standard stain option.



#### 7021 - Corian Solid Surface

1/2" thick corian solid surface with an eased edge on top of a 1-1/8" thick MDF bottom painted knife edge substrate.



#### 9021 - Quartz

2cm thick quartz with an eased edge on top of a 1-1/8" thick MDF bottom painted knife edge substrate.

Mauvilla comes standard in a round or square shape.



+0% to price.

## 4. TOP FINISH & GRAIN DIRECTION

According to the top style selected in Step 3, please indicate the finish selected. Pricing includes Grade 1 selections. Below you can find the upgrade charge to select a different grade per finish type.

### Laminate Grades

Apply % to 1003  
Gr. 1..... Included  
Gr. 2..... Add 4%  
Gr. 3..... Add 7%  
Gr. 4..... Add 12%  
Gr. 5..... Add 36%  
Gr. 6..... Add 48%

### Corian Solid Surface Grades

Apply % to 7021  
Gr. 2..... Included  
Gr. 3..... Add 6%  
Gr. 4..... Add 17%  
Gr. 6..... Add 38%  
Gr. 7..... Add 49%

### Corian Quartz Grades

Apply % to 9021  
Gr. 1..... Included  
Gr. 2..... Add 6%  
Gr. 3..... Add 12%  
Gr. 4..... Add 18%

### Selection Options

To view current selection options by grade, please visit the resources page of our website at: [www.surfacestech.com/resources](http://www.surfacestech.com/resources)

Corian Solid Surface [Top 7021] pricing is based on SurfaceTech preferred choice options. For non-preferred options, please call for quote.

### Veneer & Wood Tops

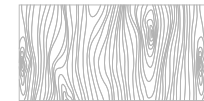
Maple species with standard stain options are included in the price. If a non-maple species is needed, please call for pricing.

### Grain Direction

Tops come standard with a grain direction going the long length of the table. Please call for pricing, if you want the grain to be ran along the short direction as that will require additional materials.



Long Direction



Short Direction

## 5. EDGE FINISH & TOP DETAILS

Depending on the Top Style selected in Step 3, an edge finish may need to be selected. 3MM and T-Mold edges are priced as standard options from our resource sheet only. Any other requests for different color options, would need to be quoted as a custom. Applicable finish options can be viewed at [www.surfacetech.com/resources](http://www.surfacetech.com/resources)

## 6. BASE FINISH

Bases are welded steel with powder coat finish and the standard is Grade 3, included in the pricelist.

### Powder Coat Grades

Apply % to 1003

Gr. 3..... Included

Gr. 4..... Add 3%

Gr. 5..... Add 5%

Gr. 6..... Add 7%

Gr. 7..... Add 12%

## 7. UPGRADE OPTIONS

(PC) Power Cutout.....Add \$65 ea.  
price per cutout, exclude quartz

(PQ) Power Cutout Quartz.....Add \$565  
price per cutout

(WMC) Wire Management Clips:.....Add \$60  
black

(RC) Rounded Corners.....Add \$20 per corner  
3" Radiues; Standard on top 1104

Custom Wood Stain:.....Add 15%  
Apply percentages to 1003 Top price.

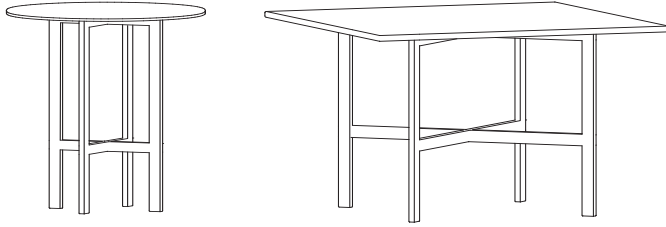
Call for custom pricing on these upgrade options:

(GT) Glass Top

(VB) Veneer - Non-Maple Species

## OTHER INFO

Upgrade percentages are applied to the 1003 price and do not compound if there are multiple upgrades selected.



## MAUVILLA

Top Style							
	1003	1001	1901	3008	5121	7021**	9021**
Top:	Lam	Lam	Lam	Veneer	Solid Wood	Corian	Quartz
Edge:	3mm	Self	Knife/Painted	3mm Wd	Solid Wood	Corian	Quartz

Product Number	Base Size	Features	Top Shape/Size							
<b>20"H Base (Not including top.)</b>										
MU1212	9-3/4"W Spread, 20"H	(4x) Steel Legs, Frame, Crossbars, Top Plate	Square: 12" x 12"	\$2,179	\$2,169	\$2,522	\$2,830	\$2,214	\$3,767	\$2,541
MU1414	9-3/4"W Spread, 20"H	(4x) Steel Legs, Frame, Crossbars, Top Plate	Square: 14" x 14"	\$2,187	\$2,173	\$2,535	\$2,837	\$2,307	\$3,776	\$2,697
MU1616	9-3/4"W Spread, 20"H	(4x) Steel Legs, Frame, Crossbars, Top Plate	Square: 16" x 16"	\$2,196	\$2,177	\$2,550	\$2,845	\$2,344	\$3,787	\$2,883
MU16	9-3/4"W Spread, 20"H	(4x) Steel Legs, Frame, Crossbars, Top Plate	Round: 16" Dia	\$2,267	\$2,256	\$2,628	\$2,918	\$2,383	\$3,865	\$2,961
MU18	9-3/4"W Spread, 20"H	(4x) Steel Legs, Frame, Crossbars, Top Plate	Round: 18" Dia	\$2,275	\$2,260	\$2,636	\$2,924	\$2,462	\$3,877	N/A
<b>16"H Base (Not including top.)</b>										
MU2424	21-3/8" Spread, 16"H	(4x) Steel Legs, Frame, Crossbars, Top Plate	Square: 24" x 24"	\$2,306	\$2,272	\$2,713	\$2,948	\$2,795	\$3,928	\$3,913
MU3030	21-3/8" Spread, 16"H	(4x) Steel Legs, Frame, Crossbars, Top Plate	Square: 30" x 30"	\$2,358	\$2,308	\$2,768	\$2,985	\$3,170	\$4,004	N/A
MU36	21-3/8" Spread, 16"H	(4x) Steel Legs, Frame, Crossbars, Top Plate	Round: 36" Dia	\$2,470	\$2,447	\$3,032	\$3,115	\$3,668	\$5,064	N/A