

KUSHLA

TABLES



Kushla table is a stylish and functional occasional table perfect for any type of space with the wire base frame and top of your choice. It's simple and classy.



TO ORDER, PLEASE SPECIFY:

- 1. Model Number
- 2. Quantity
- 3. Top Style & Shape
- 4. Top Finish & Grain Direction
- 5. Edge Finish
- 6. Base Finish
- 7. Upgrade Options

EXAMPLE:

KU20 | 5 | 1003 Round | Walnut Heights long
| Walnut Heights | Satin Silver

This would signify an order of five Kushla tables that are Round 20" Dia with a Walnut Heights laminate top, Walnut Heights 3mm edge, and Satin Silver powder coat for the base.

ABOUT KUSHLA

Kushla includes a base made with 3/8" diameter steel round bar and includes adjustable levelers. Constructed with high-quality, commercial grade plywoods and HPL laminates and veneers.

1. MODEL

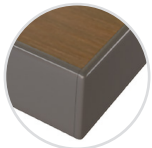
Find the Model # in the pricing matrix found on page 4 which dictates shape and size of the booth selection.

2. QUANTITY

SurfaceTech has state-of-the-art manufacturing capabilities to produce and create furniture in small quantity up to mass-scale quantities.

3. TOP STYLE & SHAPE

Select a top style by indicating with the number below.



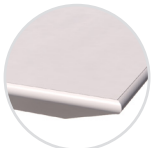
1003 - 3mm Laminate

1-1/4" high density PB core with high pressure laminate surface, 3mm edge with a phenolic backer sheet on the underneath side



1001 - Self Laminate

1-1/4" high density PB core with high pressure laminate surface, self edge in laminate with a phenolic backer balance sheet on the underneath side.



1901 - Knife Bottom Bevel PVC 3mm Edge Laminate

1-1/4" MDF core with high pressure laminate surface, 3mm edge with painted bottom bevel and on the underneath side.



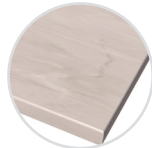
3008 - 3mm Wood Edge Veneer

1-1/4" high density PB core with veneer surface, 3mm thick x 1-1/4" wood lumber band edge and a phenolic backer balance sheet on the underneath side. Comes standard in maple species with standard stain option.



5121 - Solid Wood

1-3/4" thick solid wood plank top with eased edge. Plank size random with maximum board width of 2-1/2". Comes standard in maple species with standard stain option.



7021 - Corian Solid Surface

1/2" thick corian solid surface with an eased edge on top of a 1-1/8" thick MDF substrate with black painted beveled edge.



9021 - Quartz

2cm thick quartz with an eased edge on top of a 1-1/8" thick MDF substrate with black painted beveled edge.

Kushla comes standard in a round shape.



+ \$0

4. TOP FINISH & GRAIN DIRECTION

According to the top style selected in Step 3, please indicate the finish selected. Pricing includes Grade 1 selections. Below you can find the upgrade charge to select a different grade per finish type.

Laminate Grades

Apply % to 1003
Gr. 1..... Included
Gr. 2..... Add 4%
Gr. 3..... Add 8%
Gr. 4..... Add 13%
Gr. 5..... Add 38%
Gr. 6..... Add 51%

Corian Solid Surface Grades

Apply % to 7021
Gr. 2..... Included
Gr. 3..... Add 6%
Gr. 4..... Add 17%
Gr. 6..... Add 39%
Gr. 7..... Add 50%

Quartz Grades

Apply % to 9021
Gr. 1..... Included
Gr. 2..... Add 6%
Gr. 3..... Add 11%
Gr. 4..... Add 17%

Selection Options

To view current selection options by grade, please visit the resources page of our website at: www.surfacetech.com/resources

Corian Solid Surface [Top 7021] pricing is based on Surfacetech preferred choice options. For non-preferred options, please call for quote.

Veneer & Wood Tops

Maple species with standard stain options are included in the price. If a non-maple species is needed, please call for pricing.

Grain Direction

Tops come standard with a grain direction going the long length of the table. Please call for pricing, if you want the grain to be ran along the short direction as that will require additional materials.



Long Direction



Short Direction

5. EDGE FINISH & TOP DETAILS

Depending on the Top Style selected in Step 3, an edge finish may need to be selected. 3MM and T-Mold edges are priced as standard options from our resource sheet only. Any other requests for different color options, would need to be quoted as a custom. Applicable finish options can be viewed at www.surfacetech.com/resources

6. BASE FINISH

Powder coat is standard for the base and Grade 3 is included in the pricelist.

Powder Coat Grades

Apply % to 1003
Gr. 3..... Included
Gr. 4..... Add 4%
Gr. 5..... Add 5%
Gr. 6..... Add 7%
Gr. 7..... Add 13%

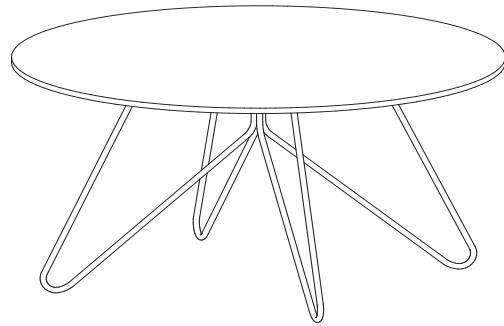
7. UPGRADE OPTIONS

Custom Wood Stain:.....Add 15%
Apply percentages to 1003 Top price.

Call for custom pricing on these upgrade options:
(GT) Glass Top
(VB) Veneer - Non-Maple Species

OTHER INFO

Upgrade percentages are applied to the 1003 price
and do not compound if there are multiple upgrades
selected.



KUSHLA

Product Number	Size (1 Base)	Features	Top Shape/Size	Top Style							
				1003	1001	1901	3008	5121	7021**	9021**	
				Top: Lam	Lam	Lam	Veneer	Solid Wood	Corian	Corian Quartz	
				Edge: 3mm	Self	Knife/Painted	3mm Wd	Solid Wood	Corian	Corian Quartz	
20"H Base (Not including top.)											
KU20	18" Spread, 20"H	(4x) Steel Legs & Frame, Top Plate	Round: 20" Dia	\$2,052	\$2,025	\$2,445	\$2,700	\$2,333	\$3,689	\$3,174	
15"H Base (Not including top.)											
KU30	27" Spread, 15"H	(4x) Steel Legs & Frame, Top Plate	Round: 30" Dia	\$2,204	\$2,189	\$2,620	\$2,839	\$2,998	\$3,886	\$4,676	

**Includes 1-1/8" thick MDF substrate with black painted beveled edge.