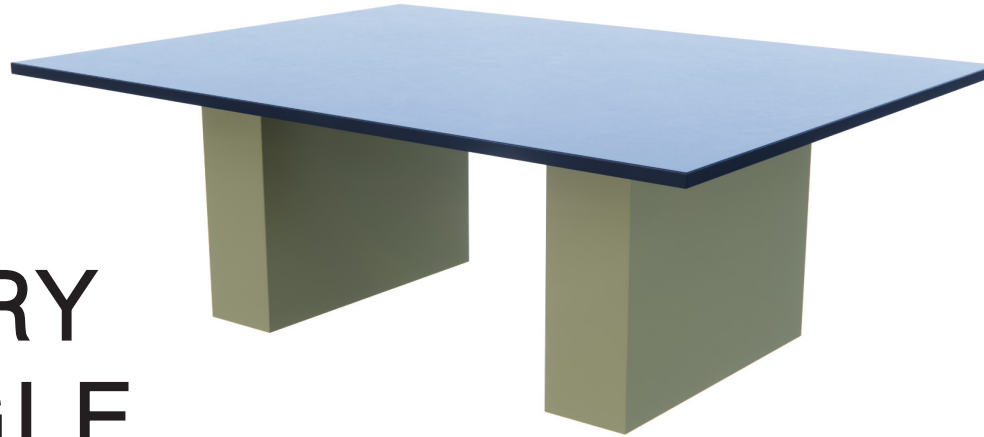


GEOMETRY RECTANGLE

TABLES



Built on rectangular pillars, the Geometry Rectangle table is a stylish way to have all the technology you need without displaying the wires. In addition to technological upgrades, this model offers footrails for a more comfortable meeting.



TO ORDER, PLEASE SPECIFY:

- 1. Model Number
- 2. Quantity
- 3. Top Style & Shape
- 4. Top Finish & Grain Direction
- 5. Edge Finish
- 6. Base Finish
- 7. Upgrade Options

EXAMPLE:

GR7242 | 5 | 1003 Rectangle | Walnut Heights long
| Walnut Heights | Designer White | PC

This would signify an order of five Geometry Rectangle tables that are 42" W x 72" L rectangles with a Walnut Heights laminate top, Walnut Heights 3mm edge, Designer White laminate for the Base, and a power cutout.

ABOUT GEOMETRY RECTANGLE

Geometry Rectangle includes a base system with a laminate finish and adjustable levelers. Constructed with high-quality commercial grade plywoods and HPL laminates and veneers. Tops longer than 120" will be built in sections and include tite joint fasteners. Corian and Quartz tops include 2" x 2" 11GA steel tube support frame.

1. MODEL

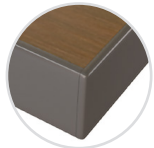
Find the Model # in the pricing matrix found on pages 4-8 which dictates shape and size of the booth selection.

2. QUANTITY

SurfaceTech has state-of-the-art manufacturing capabilities to produce and create furniture in small quantity up to mass-scale quantities.

3. TOP STYLE & SHAPE

Select a top style by indicating with the number below.



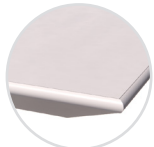
1003 - 3mm Laminate

1-1/4" high density PB core with high pressure laminate surface, 3mm edge with a phenolic backer sheet on the underneath side



1001 - Self Laminate

1-1/4" high density PB core with high pressure laminate surface, self edge in laminate with a phenolic backer balance sheet on the underneath side.



1901 - Knife Bottom Bevel PVC 3mm Edge Laminate

1-1/4" MDF core with high pressure laminate surface, 3mm edge with painted bottom bevel and on the underneath side.



1104 - T-Mold Laminate

1-1/4" high density PB core with high pressure flush laminate surface, with 1-1/4" hard rubber t-mold edge and a phenolic backer balance sheet on the underneath side. This table comes standard with 3" radius corners.



2014 - Solid Wood Edge Laminate

1-1/4" high density PB core with high pressure flush laminate surface with 1-1/4" x 1-1/4" maple hardwood edge with eased edge profile and a phenolic backer balance sheet on the underneath side.



3008 - 3mm Wood Edge Veneer

1-1/4" high density PB core with veneer surface, 3mm thick x 1-1/4" wood lumber band edge and a phenolic backer balance sheet on the underneath side. Comes standard in maple species with standard stain option.



4014 - Solid Wood Veneer

1-1/4" high density PB core with flush veneer surface, 1-1/4" thick x 1-1/4" wood eased edge and a phenolic backer balance sheet on the underneath side. Comes standard in maple species with standard stain option.



5121 - Solid Wood

1-3/4" thick solid wood plank top with eased edge. Plank size random with maximum board width of 2-1/2". Comes standard in maple species with standard stain option.



7021 - Corian Solid Surface

1/2" thick corian solid surface with an eased edge on top of a 1-1/8" thick MDF bottom painted knife edge substrate and a 2" x 2" 11 GA steel tube ladder support frame (SS*) for the rectangle base legs.



9021 - Quartz

2cm thick quartz with an eased edge on top of a 1-1/8" thick MDF bottom painted knife edge substrate and a 2" x 2" 16 GA steel tube ladder support frame (SS*) for the rectangle base legs.

Geometry Rectangle comes standard in a rectangle shape.

A boat shape (B) can be requested.



+0



+7%*

*Excludes tops 2014 & 4014, call for pricing.

4. TOP FINISH & GRAIN DIRECTION

According to the top style selected in Step 3, please indicate the finish selected. Pricing includes Grade 1 selections. Below you can find the upgrade charge to select a different grade per finish type.

Laminate Grades

Apply % to 1003
Gr. 1..... Included
Gr. 2..... Add 7%
Gr. 3..... Add 13%
Gr. 4..... Add 22%
Gr. 5..... Add 63%

Quartz Grades

Apply % to 9021
Gr. 1..... Included
Gr. 2..... Add 7%
Gr. 3..... Add 14%
Gr. 4..... Add 21%
Gr. 5..... Add 27%
Gr. 6..... Add 34%

Selection Options

To view current selection options by grade, please visit the resources page of our website at: www.surfacetech.com/resources

Veneer & Wood Tops

Maple species with standard stain options are included in the price. If a non-maple species is needed, please call for pricing.

Grain Direction

Tops come standard with a grain direction going the long length of the table. Please call for pricing, if you want the grain to be ran along the short direction as that will require additional materials.



Long Direction



Short Direction

*(SS) - add (SS) suffix to orders for 7021 and 9021

5. EDGE FINISH & TOP DETAILS

Depending on the Top Style selected in Step 3, an edge finish may need to be selected. 3MM and T-Mold edges are priced as standard options from our resource sheet only. Any other requests for different color options, would need to be quoted as a custom. Applicable finish options can be viewed at www.surfacetech.com/resources

6. BASE FINISH

Laminate is standard for the base and Gr 1 is included in the pricelist.

For Corian Solid Surface and Quartz only if selecting a base laminate grade higher than Gr. 1, you will apply the applicable percentage below.

Laminate Grades

Apply % to 1003
Gr. 1..... Included
Gr. 2..... Add 7%
Gr. 3..... Add 13%
Gr. 4..... Add 22%
Gr. 5..... Add 63%

7. UPGRADE OPTIONS

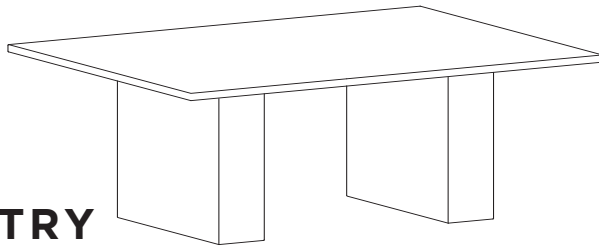
- (D) Cable Door.....Add \$180
with touch latch
- (G) Table Top Grommet.....Add \$90
available in black with 3-1/8" diameter, excludes quartz
- (GQ) Table Top Grommet Quartz.....Add \$590
available in black with 3-1/8" diameter
- (PC) Power Cutout.....Add \$65 ea.
price per cutout, excludes quartz
- (PQ) Power Cutout for Quartz.....Add \$565 ea.
price per cutout
- (MV) Maple Veneer Base Legs.....Add 50%.
standard stain option

Call for custom pricing on these upgrade options:

- (A) Metal Apron System
- (AC) Metal Apron System with Power Cutouts
- (GL) Glass Top, 1/4" Thick, Tempered (over Sub-top)
- (MB) Metal Laminate Base
- (VB) Veneer-Non-Maple Species

OTHER INFO

Upgrade percentages are applied to the 1003 price and do not compound if there are multiple upgrades selected.



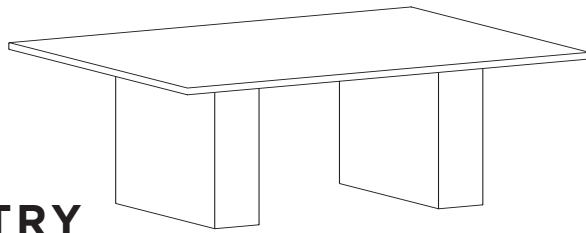
2x Laminated Base Legs

GEOMETRY RECTANGLE

Top Style											
	1003	1001	1901	1104	2014	3008	4014	5121	7021**	9021**	
Top:	Lam	Lam	Lam	Lam	Lam	Veneer	Veneer	Solid Wood	Corian	Corian Quartz	
Edge:	3mm	Self	Knife/ Painted	T-Mold	Solid Wd Edge	3mm Wd	Solid Wd	Solid Wood	Corian	Corian Quartz	

Product Number	Size (1 Base)	Features	Top Shape/Size	Edge:	1003	1001	1901	1104	2014	3008	4014	5121	7021**	9021**
GR7242	24"W x 8"D x 27-3/4"H	Set of 2 Laminated Base Legs	Rectangle: 42"W x 72"L	\$3,380	\$3,499	\$4,011	\$3,376	\$4,175	\$4,320	\$5,259	\$7,982	\$10,456	\$15,569	
GR7248	24"W x 8"D x 27-3/4"H	Set of 2 Laminated Base Legs	Rectangle: 48"W x 72"L	\$3,460	\$3,582	\$4,090	\$3,453	\$4,285	\$4,326	\$5,300	\$8,024	\$10,734	\$16,977	
GR7254	30"W x 8"D x 27-3/4"H	Set of 2 Laminated Base Legs	Rectangle: 54"W x 72"L	\$4,196	\$4,113	\$4,855	\$4,190	\$5,003	\$6,361	\$7,586	\$9,742	\$11,362	\$18,981	
GR7260	30"W x 8"D x 27-3/4"H	Set of 2 Laminated Base Legs	Rectangle: 60"W x 72"L	\$4,237	\$4,331	\$4,905	\$4,233	\$5,079	\$6,413	\$7,672	\$9,785	\$11,487	\$20,399	
GR8442	24"W x 8"D x 27-3/4"H	Set of 2 Laminated Base Legs	Rectangle: 42"W x 84"L	\$3,672	\$3,801	\$4,615	\$3,664	\$4,787	\$4,424	\$5,439	\$8,954	\$11,108	\$17,955	
GR8448	24"W x 8"D x 27-3/4"H	Set of 2 Laminated Base Legs	Rectangle: 48"W x 84"L	\$3,777	\$3,905	\$4,732	\$3,768	\$4,944	\$4,431	\$5,479	\$9,687	\$13,903	\$19,191	
GR8454	30"W x 8"D x 27-3/4"H	Set of 2 Laminated Base Legs	Rectangle: 54"W x 84"L	\$4,617	\$4,450	\$5,599	\$4,606	\$5,665	\$6,376	\$7,667	\$10,931	\$14,560	\$21,450	
GR8460	30"W x 8"D x 27-3/4"H	Set of 2 Laminated Base Legs	Rectangle: 60"W x 84"L	\$4,636	\$4,746	\$5,628	\$4,624	\$5,812	\$6,427	\$7,752	\$11,403	\$14,795	\$22,968	
GR9642	24"W x 8"D x 27-3/4"H	Set of 2 Laminated Base Legs	Rectangle: 42"W x 96"L	\$3,774	\$3,907	\$4,732	\$3,764	\$4,944	\$4,440	\$5,529	\$9,434	\$11,291	\$19,327	
GR9648	24"W x 8"D x 27-3/4"H	Set of 2 Laminated Base Legs	Rectangle: 48"W x 96"L	\$3,788	\$3,916	\$4,767	\$3,777	\$4,982	\$4,445	\$5,569	\$10,234	\$14,090	\$21,197	
GR9654	30"W x 8"D x 27-3/4"H	Set of 2 Laminated Base Legs	Rectangle: 54"W x 96"L	\$4,628	\$4,749	\$5,616	\$4,618	\$5,797	\$6,389	\$7,748	\$11,545	\$14,756	\$23,684	
GR9660	30"W x 8"D x 27-3/4"H	Set of 2 Laminated Base Legs	Rectangle: 60"W x 96"L	\$4,645	\$4,757	\$5,647	\$4,634	\$5,829	\$6,443	\$7,833	\$12,346	\$14,816	\$25,563	
GR10842	24"W x 8"D x 27-3/4"H	Set of 2 Laminated Base Legs	Rectangle: 42"W x 108"L*	\$5,463	\$5,878	\$6,740	\$5,452	\$6,601	\$7,586	\$9,207	\$11,493	\$15,692	\$22,472	
GR10848	24"W x 8"D x 27-3/4"H	Set of 2 Laminated Base Legs	Rectangle: 48"W x 108"L*	\$5,481	\$5,887	\$6,771	\$5,471	\$6,612	\$7,594	\$9,247	\$12,421	\$16,302	\$24,593	
GR10854	30"W x 8"D x 27-3/4"H	Set of 2 Laminated Base Legs	Rectangle: 54"W x 108"L*	\$5,995	\$6,417	\$7,293	\$5,986	\$7,131	\$9,149	\$10,837	\$13,888	\$16,984	\$27,229	

*Includes 2x Stretchers in between each base leg - 6"H finish to match legs

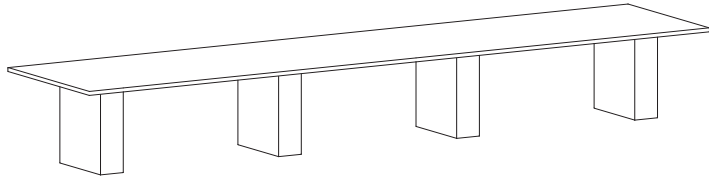


2x Laminated Base Legs

GEOMETRY RECTANGLE

				Top Style										
				1003	1001	1901	1104	2014	3008	4014	5121	7021**	9021**	
Product Number	Size (1 Base)	Features	Top Shape/Size	Top:	Lam	Lam	Lam	Lam	Lam	Veneer	Veneer	Solid Wood	Corian	Corian Quartz
				Edge:	3mm	Self	Knife/ Painted	T-Mold	Solid Wd Edge	3mm Wd	Solid Wd	Solid Wood	Corian	Corian Quartz
GR10860	30"W x 8"D x 27-3/4"H	Set of 2 Laminated Base Legs	Rectangle: 60"W x 108"L*	\$6,011	\$6,962	\$7,321	\$5,989	\$7,161	\$9,224	\$10,946	\$14,787	\$17,159	\$29,482	
GR12042	24"W x 8"D x 27-3/4"H	Set of 2 Laminated Base Legs	Rectangle: 42"W x 120"L*	\$5,696	\$6,118	\$6,997	\$5,684	\$6,855	\$7,902	\$9,618	\$12,392	\$16,369	\$24,604	
GR12048	24"W x 8"D x 27-3/4"H	Set of 2 Laminated Base Legs	Rectangle: 48"W x 120"L*	\$5,712	\$6,127	\$7,028	\$5,701	\$6,866	\$7,917	\$9,638	\$13,390	\$17,016	\$26,959	
GR12054	30"W x 8"D x 27-3/4"H	Set of 2 Laminated Base Legs	Rectangle: 54"W x 120"L*	\$6,227	\$6,655	\$7,550	\$6,217	\$7,386	\$9,367	\$11,121	\$15,235	\$17,794	\$29,840	
GR12060	30"W x 8"D x 27-3/4"H	Set of 2 Laminated Base Legs	Rectangle: 60"W x 120"L*	\$6,242	\$7,212	\$7,579	\$6,221	\$7,415	\$9,442	\$11,229	\$15,300	\$17,924	\$32,337	
GR13242	24"W x 8"D x 27-3/4"H	Set of 3 Laminated Base Legs	Rectangle: 42"W x 132"L	\$6,200	\$6,117	\$7,753	\$6,111	\$7,332	\$7,939	\$9,692	\$14,094	\$16,872	\$26,820	
GR13248	24"W x 8"D x 27-3/4"H	Set of 3 Laminated Base Legs	Rectangle: 48"W x 132"L	\$6,233	\$6,125	\$7,816	\$6,131	\$7,372	\$7,945	\$9,732	\$15,247	\$17,523	\$29,409	
GR13254	30"W x 8"D x 27-3/4"H	Set of 3 Laminated Base Legs	Rectangle: 54"W x 132"L	\$7,035	\$7,548	\$8,591	\$7,021	\$8,144	\$9,635	\$11,457	\$17,166	\$18,562	\$32,889	
GR13260	30"W x 8"D x 27-3/4"H	Set of 3 Laminated Base Legs	Rectangle: 60"W x 132"L	\$7,057	\$8,185	\$8,632	\$7,042	\$8,174	\$9,850	\$11,565	\$18,483	\$18,696	\$35,478	
GR14442	24"W x 8"D x 27-3/4"H	Set of 3 Laminated Base Legs	Rectangle: 42"W x 144"L	\$6,407	\$6,187	\$8,177	\$6,175	\$7,430	\$7,943	\$9,765	\$14,791	\$17,749	\$28,689	
GR14448	24"W x 8"D x 27-3/4"H	Set of 3 Laminated Base Legs	Rectangle: 48"W x 144"L	\$6,442	\$6,197	\$8,247	\$6,207	\$7,484	\$7,974	\$9,828	\$16,041	\$18,449	\$31,513	
GR14454	30"W x 8"D x 27-3/4"H	Set of 3 Laminated Base Legs	Rectangle: 54"W x 144"L	\$7,246	\$7,575	\$9,050	\$7,239	\$8,271	\$9,649	\$11,537	\$18,057	\$19,508	\$35,210	
GR14460	30"W x 8"D x 27-3/4"H	Set of 3 Laminated Base Legs	Rectangle: 60"W x 144"L	\$7,271	\$8,220	\$9,098	\$7,267	\$8,304	\$9,724	\$11,646	\$19,307	\$19,651	\$38,110	
GR15642	24"W x 8"D x 27-3/4"H	Set of 3 Laminated Base Legs	Rectangle: 42"W x 156"L*	\$8,656	\$8,421	\$10,523	\$8,411	\$9,727	\$10,729	\$12,880	\$18,183	\$22,246	\$32,719	

*Includes 2x Stretchers in between each base leg - 6"H finish to match legs



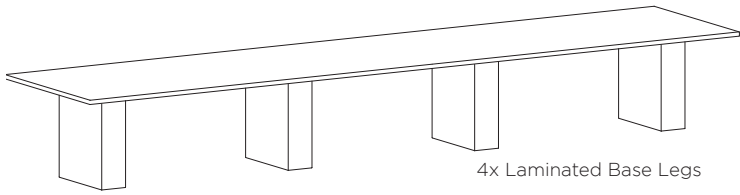
GEOMETRY RECTANGLE

4x Laminated Base Legs

Top Style											
	1003	1001	1901	1104	2014	3008	4014	5121	7021**	9021**	
Top:	Lam	Lam	Lam	Lam	Lam	Veneer	Veneer	Solid Wood	Corian	Corian Quartz	
Edge:	3mm	Self	Knife/ Painted	T-Mold	Solid Wd Edge	3mm Wd	Solid Wd	Solid Wood	Corian	Corian Quartz	

Product Number	Size (1 Base)	Features	Top Shape/Size	Edge:	1003	1001	1901	1104	2014	3008	4014	5121	7021**	9021**
GR15648	24"W x 8"D x 27-3/4"H	Set of 3 Laminated Base Legs	Rectangle: 48"W x 156"L*		\$8,695	\$8,429	\$10,606	\$8,448	\$9,794	\$10,737	\$12,920	\$19,553	\$22,381	\$35,777
GR15654	30"W x 8"D x 27-3/4"H	Set of 3 Laminated Base Legs	Rectangle: 54"W x 156"L*		\$9,661	\$9,825	\$11,729	\$9,653	\$10,734	\$13,407	\$15,624	\$21,689	\$23,343	\$39,715
GR15660	30"W x 8"D x 27-3/4"H	Set of 3 Laminated Base Legs	Rectangle: 60"W x 156"L*		\$9,729	\$10,494	\$11,781	\$9,684	\$10,785	\$13,504	\$15,755	\$23,058	\$23,702	\$42,985
GR16842	24"W x 8"D x 27-3/4"H	Set of 3 Laminated Base Legs	Rectangle: 42"W x 168"L*		\$8,762	\$8,518	\$10,727	\$8,511	\$9,880	\$10,915	\$13,133	\$18,917	\$22,763	
GR16848	24"W x 8"D x 27-3/4"H	Set of 3 Laminated Base Legs	Rectangle: 48"W x 168"L*		\$8,802	\$8,528	\$10,802	\$8,548	\$9,963	\$10,922	\$13,173	\$20,384	\$22,914	\$37,892
GR16854	30"W x 8"D x 27-3/4"H	Set of 3 Laminated Base Legs	Rectangle: 54"W x 168"L*		\$9,966	\$9,927	\$11,973	\$9,958	\$11,082	\$13,460	\$15,741	\$22,617	\$23,853	\$42,070
GR16860	30"W x 8"D x 27-3/4"H	Set of 3 Laminated Base Legs	Rectangle: 60"W x 168"L*		\$9,996	\$10,614	\$12,030	\$9,991	\$11,153	\$13,555	\$15,872	\$24,083	\$24,172	\$45,423
GR18042	24"W x 8"D x 27-3/4"H	Set of 3 Laminated Base Legs	Rectangle: 42"W x 180"L*		\$9,111	\$8,853	\$11,169	\$8,850	\$10,265	\$11,217	\$13,499	\$19,900	\$23,447	\$36,732
GR18048	24"W x 8"D x 27-3/4"H	Set of 3 Laminated Base Legs	Rectangle: 48"W x 180"L*		\$9,150	\$8,864	\$11,246	\$8,885	\$10,364	\$11,223	\$13,540	\$21,464	\$23,602	\$40,251
GR18054	30"W x 8"D x 27-3/4"H	Set of 3 Laminated Base Legs	Rectangle: 54"W x 180"L*		\$10,534	\$10,260	\$12,627	\$10,520	\$11,687	\$13,757	\$16,108	\$23,794	\$24,634	\$44,687
GR18060	30"W x 8"D x 27-3/4"H	Set of 3 Laminated Base Legs	Rectangle: 60"W x 180"L*		\$10,567	\$10,961	\$12,688	\$10,556	\$11,780	\$13,856	\$16,238	\$25,358	\$24,896	\$48,275
GR19242	24"W x 8"D x 27-3/4"H	Set of 4 Laminated Base Legs	Rectangle: 42"W x 192"L		\$8,266	\$7,991	\$10,422	\$8,117	\$9,449	\$10,113	\$12,464	\$19,481	\$22,695	\$37,540

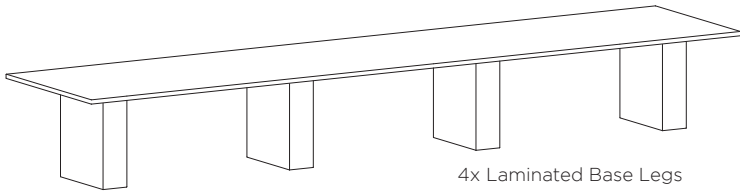
*Includes 2x Stretchers in between each base leg - 6"H finish to match legs



GEOMETRY RECTANGLE

				Top Style										
				1003	1001	1901	1104	2014	3008	4014	5121	7021**	9021**	
Product Number	Size (1 Base)	Features	Top Shape/Size	Top:	Lam	Lam	Lam	Lam	Lam	Veneer	Veneer	Solid Wood	Corian	Corian Quartz
				Edge:	3mm	Self	Knife/ Painted	T-Mold	Solid Wd Edge	3mm Wd	Solid Wd	Solid Wood	Corian	Corian Quartz
GR19248	24"W x 8"D x 27-3/4"H	Set of 4 Laminated Base Legs	Rectangle: 48"W x 192"L	\$8,312	\$8,007	\$10,512	\$8,160	\$9,580	\$10,122	\$12,504	\$21,142	\$22,860	\$41,295	
GR19254	30"W x 8"D x 27-3/4"H	Set of 4 Laminated Base Legs	Rectangle: 54"W x 192"L	\$9,762	\$9,475	\$11,954	\$9,742	\$10,946	\$12,910	\$15,327	\$23,824	\$24,158	\$46,233	
GR19260	30"W x 8"D x 27-3/4"H	Set of 4 Laminated Base Legs	Rectangle: 60"W x 192"L	\$9,797	\$10,200	\$12,020	\$9,786	\$11,068	\$13,007	\$15,458	\$25,486	\$24,582	\$49,631	
GR20442	24"W x 8"D x 27-3/4"H	Set of 4 Laminated Base Legs	Rectangle: 42"W x 204"L	\$8,552	\$8,261	\$10,802	\$8,532	\$9,760	\$11,664	\$14,344	\$20,715	\$23,064	\$39,554	
GR20448	24"W x 8"D x 27-3/4"H	Set of 4 Laminated Base Legs	Rectangle: 48"W x 204"L	\$8,602	\$8,278	\$10,896	\$8,583	\$9,920	\$11,671	\$14,384	\$22,495	\$23,239	\$43,550	
GR20454	30"W x 8"D x 27-3/4"H	Set of 4 Laminated Base Legs	Rectangle: 54"W x 204"L	\$9,822	\$9,538	\$12,125	\$9,806	\$11,048	\$14,513	\$17,258	\$25,297	\$24,551	\$48,740	
GR20460	30"W x 8"D x 27-3/4"H	Set of 4 Laminated Base Legs	Rectangle: 60"W x 204"L	\$9,875	\$10,280	\$12,196	\$9,863	\$11,196	\$14,629	\$17,408	\$27,077	\$24,884	\$52,860	
GR21642	24"W x 8"D x 27-3/4"H	Set of 4 Laminated Base Legs	Rectangle: 42"W x 216"L*	\$11,900	\$11,595	\$14,281	\$11,842	\$13,135	\$14,938	\$17,683	\$24,668	\$26,505	\$44,652	
GR21648	24"W x 8"D x 27-3/4"H	Set of 4 Laminated Base Legs	Rectangle: 48"W x 216"L*	\$11,952	\$11,609	\$14,381	\$11,927	\$13,313	\$14,949	\$17,728	\$26,546	\$26,689	\$48,875	
GR21654	30"W x 8"D x 27-3/4"H	Set of 4 Laminated Base Legs	Rectangle: 54"W x 216"L*	\$13,192	\$12,875	\$15,619	\$13,164	\$14,428	\$17,779	\$20,592	\$29,445	\$27,963	\$54,300	
GR21660	30"W x 8"D x 27-3/4"H	Set of 4 Laminated Base Legs	Rectangle: 60"W x 216"L*	\$13,229	\$13,638	\$15,686	\$13,223	\$14,577	\$17,900	\$20,746	\$31,322	\$28,130	\$58,653	
GR22842	24"W x 8"D x 27-3/4"H	Set of 4 Laminated Base Legs	Rectangle: 42"W x 228"L*	\$12,019	\$11,698	\$14,496	\$11,977	\$13,271	\$14,987	\$17,801	\$25,402	\$26,910	\$46,558	

*Includes 2x Stretchers in between each base leg - 6"H finish to match legs



GEOMETRY RECTANGLE

				Top Style									
				1003	1001	1901	1104	2014	3008	4014	5121	7021**	9021**
				Top: Lam	Lam	Lam	Lam	Lam	Veneer	Veneer	Solid Wood	Corian	Corian Quartz
Product Number	Size (1 Base)	Features	Top Shape/Size	Edge: 3mm	Self	Knife/ Painted	T-Mold	Solid Wd Edge	3mm Wd	Solid Wd	Solid Wood	Corian	Corian Quartz
GR22848	24"W x 8"D x 27-3/4"H	Set of 4 Laminated Base Legs	Rectangle: 48"W x 228"L*	\$12,069	\$11,713	\$14,596	\$12,048	\$13,479	\$15,009	\$17,854	\$27,377	\$28,311	\$51,012
GR22854	30"W x 8"D x 27-3/4"H	Set of 4 Laminated Base Legs	Rectangle: 54"W x 228"L*	\$13,318	\$12,988	\$15,843	\$13,288	\$14,574	\$17,830	\$20,709	\$30,373	\$28,343	\$56,676
GR22860	30"W x 8"D x 27-3/4"H	Set of 4 Laminated Base Legs	Rectangle: 60"W x 228"L*	\$13,360	\$13,772	\$15,914	\$13,347	\$14,730	\$17,949	\$20,863	\$32,348	\$28,466	\$61,118
GR24042	24"W x 8"D x 27-3/4"H	Set of 5 Laminated Base Legs	Rectangle: 42"W x 240"L	\$10,161	\$9,828	\$12,729	\$10,137	\$11,430	\$13,074	\$15,953	\$24,507	\$25,296	\$46,498
GR24048	24"W x 8"D x 27-3/4"H	Set of 5 Laminated Base Legs	Rectangle: 48"W x 240"L	\$10,213	\$9,843	\$12,828	\$10,191	\$11,652	\$13,103	\$16,016	\$26,243	\$25,444	\$51,182
GR24054	30"W x 8"D x 27-3/4"H	Set of 5 Laminated Base Legs	Rectangle: 54"W x 240"L	\$11,724	\$11,384	\$14,339	\$11,706	\$12,997	\$16,172	\$19,117	\$29,591	\$26,949	\$57,340
GR24060	30"W x 8"D x 27-3/4"H	Set of 5 Laminated Base Legs	Rectangle: 60"W x 240"L	\$11,766	\$12,186	\$14,419	\$11,752	\$13,152	\$16,291	\$19,270	\$31,664	\$27,081	\$61,906

*Includes 2x Stretchers in between each base leg - 6"H finish to match legs