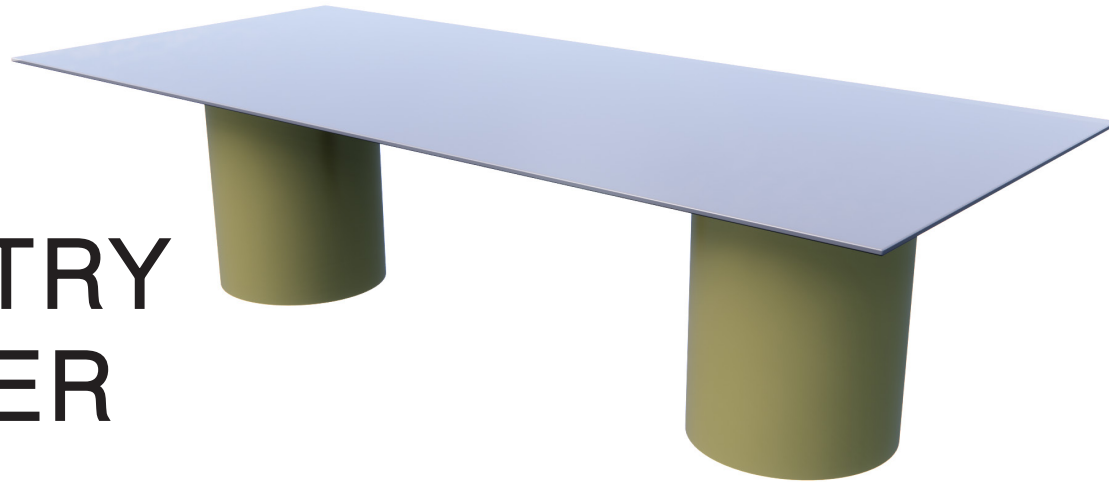


GEOMETRY CYLINDER

TABLES



The Geometry Cylinder features rounded base pedestals that are great for hiding away all the power suppliers and wires that go with a tech savvy table. With the optional addition of power drawers, this table is perfect for creative meetings, product pitches, and so much more!



TO ORDER, PLEASE SPECIFY:

- 1. Model Number
- 2. Quantity
- 3. Top Style & Shape
- 4. Top Finish & Grain Direction
- 5. Edge Finish
- 6. Base Finish
- 7. Upgrade Options

EXAMPLE:

GY8442 | 5 | 1003 Rectangle | Walnut Heights long
| Walnut Heights | Designer White | PC

This would signify an order of five Geometry Cylinder tables that are 42" W x 84" L rectangles with a Walnut Heights laminate top, Walnut Heights 3mm edge, Designer White laminate for the base, and a power cutout.

ABOUT GEOMETRY CYLINDER

Geometry Cylinder includes a base system with a laminate finish and adjustable levelers. Constructed with high-quality, commercial grade plywoods and HPL laminates and veneers. Tops longer than 120" will be built in sections and include tite joint fasteners. Corian and Quartz tops include 2" x 2" 11GA steel tube support frame.

1. MODEL

Find the Model # in the pricing matrix found on pages 4-8 which dictates shape and size of the booth selection.

2. QUANTITY

SurfaceTech has state-of-the-art manufacturing capabilities to produce and create furniture in small quantity up to mass-scale quantities.

3. TOP STYLE & SHAPE

Select a top style by indicating with the number below.



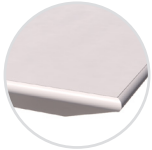
1003 - 3mm Laminate

1-1/4" high density PB core with high pressure laminate surface, 3mm edge with a phenolic backer sheet on the underneath side



1001 - Self Laminate

1-1/4" high density PB core with high pressure laminate surface, self edge in laminate with a phenolic backer balance sheet on the underneath side.



1901 - Knife Bottom Bevel PVC 3mm Edge Laminate

1-1/4" MDF core with high pressure laminate surface, 3mm edge with painted bottom bevel and on the underneath side.



1104 - T-Mold Laminate

1-1/4" high density PB core with high pressure flush laminate surface, with 1-1/4" hard rubber t-mold edge and a phenolic backer balance sheet on the underneath side. This table comes standard with 3" radius corners.



2014 - Solid Wood Edge Laminate

1-1/4" high density PB core with high pressure flush laminate surface with 1-1/4" x 1-1/4" maple hardwood edge with eased edge profile and a phenolic backer balance sheet on the underneath side.



3008 - 3mm Wood Edge Veneer

1-1/4" high density PB core with veneer surface, 3mm thick x 1-1/4" wood lumber band edge and a phenolic backer balance sheet on the underneath side. Comes standard in maple species with standard stain option.



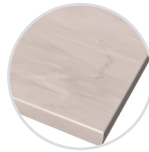
4014 - Solid Wood Veneer

1-1/4" high density PB core with flush veneer surface, 1-1/4" thick x 1-1/4" wood eased edge and a phenolic backer balance sheet on the underneath side. Comes standard in maple species with standard stain option.



5121 - Solid Wood

1-3/4" thick solid wood plank top with eased edge. Plank size random with maximum board width of 2-1/2". Comes standard in maple species with standard stain option.



7021 - Corian Solid Surface

1/2" thick corian solid surface with an eased edge on top of a 1-1/8" thick MDF bottom painted knife edge substrate and a 2" x 2" 11 GA steel tube ladder support frame (SS*) for the cylinder base legs.



9021 - Quartz

2cm thick quartz with an eased edge on top of a 1-1/8" thick MDF bottom painted knife edge substrate and a 2" x 2" 11 GA steel tube ladder support frame (SS*) for the cylinder base legs.

Geometry Cylinder comes standard in a round, square, rectangle shape.

A boat shape (B) can be requested.



*Excludes tops 2014 & 4014, call for pricing.

4. TOP FINISH & GRAIN DIRECTION

According to the top style selected in Step 3, please indicate the finish selected. Pricing includes Grade 1 selections. Below you can find the upgrade charge to select a different grade per finish type.

Laminate Grades

Apply % to 1003
Gr. 1..... Included
Gr. 2..... Add 7%
Gr. 3..... Add 13%
Gr. 4..... Add 22%
Gr. 5..... Add 63%

Quartz Grades

Apply % to 9021
Gr. 1..... Included
Gr. 2..... Add 7%
Gr. 3..... Add 14%
Gr. 4..... Add 21%
Gr. 5..... Add 27%
Gr. 6..... Add 34%

Selection Options

To view current selection options by grade, please visit the resources page of our website at: www.surfacetech.com/resources

Veneer & Wood Tops

Maple species with standard stain options are included in the price. If a non-maple species is needed, please call for pricing.

Grain Direction

Tops come standard with a grain direction going the long length of the table. Please call for pricing, if you want the grain to be ran along the short direction as that will require additional materials.



Long Direction



Short Direction

*(SS) - add (SS) suffix to orders for 7021 and 9021

5. EDGE FINISH & TOP DETAILS

Depending on the Top Style selected in Step 3, an edge finish may need to be selected. 3MM and T-Mold edges are priced as standard options from our resource sheet only. Any other requests for different color options, would need to be quoted as a custom. Applicable finish options can be viewed at www.surfacetech.com/resources

6. BASE FINISH

Laminate is standard for the base and Gr 1 is included in the pricelist.

For Corian Solid Surface and Quartz only if selecting a base laminate grade higher than 1, you will apply the applicable percentage below.

Laminate Grades

Apply % to 1003

Gr. 1..... Included

Gr. 2..... Add 7%

Gr. 3..... Add 13%

Gr. 4..... Add 22%

Gr. 5..... Add 63%

7. UPGRADE OPTIONS

(D) Cable Door.....Add \$180
with Touch Latch

(G) Table Top Grommet.....Add \$90
available in black with 3-1/8" diameter, excludes quartz

(GQ) Table Top Grommet Quartz.....Add \$590
available in black with 3-1/8" diameter

(PC) Power Cutout.....Add \$65 ea.
price per cutout, excludes quartz

(PQ) Power Cutout for Quartz.....Add \$565 ea.
price per cutout

(MV) Maple Veneer Base Legs.....Add 50%.
standard stain option

(BR) Matching Plinth on Bases.....Add \$265 per base leg

Call for custom pricing on these upgrade options:

(A) Metal Apron System

(AC) Metal Apron System with Power Cutouts

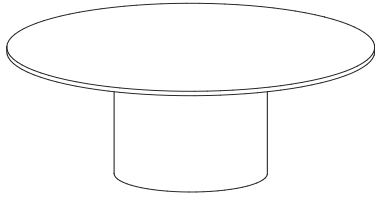
(GL) Glass Top, 1/4" Thick, Tempered (over Sub-top)

(MB) Metal Laminate Base

(VB) Veneer-Non-Maple Species

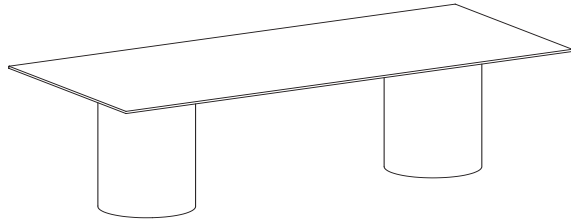
OTHER INFO

Upgrade percentages are applied to the 1003 price and do not compound if there are multiple upgrades selected.



GEOMETRY CYLINDER

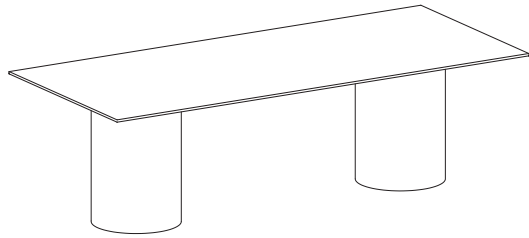
Product Number	Size (1 Base)	Features	Top Shape/Size	Top Style									
				1003	1001	1901	1104	2014	3008	4014	5121	7021**	9021**
				Top: Lam	Lam	Lam	Lam	Lam	Veneer	Veneer	Solid Wood	Corian	Corian Quartz
Edge: 3mm	Self	Knife/ Painted	T-Mold	Solid Wd Edge	3mm Wd	Solid Wd	Solid Wood	Corian	Corian Quartz				
GY4242	18" Dia x 27-3/4"H	1 Laminated Base Leg	Square: 42" x 42"	\$2,339	\$2,238	\$2,882	\$2,333	\$3,077	\$3,029	\$1,705	\$4,856	\$6,199	\$8,283
GY42	18" Dia x 27-3/4"H	1 Laminated Base Leg	Round: 42" Dia	\$2,392	\$2,284	\$3,103	\$2,385	N/A	\$3,101	N/A	\$4,276	\$6,311	\$8,417
GY4848	24" Dia x 27-3/4"H	1 Laminated Base Leg	Square: 48" x 48"	\$2,559	\$2,464	\$3,123	\$2,553	\$3,315	\$3,268	\$4,160	\$5,793	\$8,351	\$12,047
GY48	24" Dia x 27-3/4"H	1 Laminated Base Leg	Round: 48" Dia	\$2,614	\$2,511	\$3,340	\$2,632	N/A	\$3,333	N/A	\$6,071	\$8,406	\$12,326
GY5454	30" Dia x 27-3/4"H	1 Laminated Base Leg	Square: 54" x 54"	\$3,377	\$3,577	\$4,145	\$3,370	\$4,283	\$5,227	\$6,353	\$7,213	\$10,029	\$14,579
GY54	30" Dia x 27-3/4"H	1 Laminated Base Leg	Round: 54" Dia	\$3,463	\$3,679	\$4,292	\$3,456	N/A	\$5,289	N/A	\$7,480	\$10,243	\$15,458
GY60	30" Dia x 27-3/4"H	1 Laminated Base Leg	Round: 60" Dia	\$3,517	\$3,702	\$4,423	\$3,512	N/A	\$5,353	N/A	\$8,466	\$11,259	\$18,375
GY8442	24" Dia x 27-3/4"H	Set of 2 Laminated Base Legs	Rectangle: 42"W x 84"L	\$4,695	\$4,824	\$5,639	\$4,687	\$5,810	\$5,447	\$6,462	\$9,977	\$12,132	\$18,978
GY8448	24" Dia x 27-3/4"H	Set of 2 Laminated Base Legs	Rectangle: 48"W x 84"L	\$4,801	\$4,928	\$5,755	\$4,791	\$5,967	\$5,454	\$6,503	\$10,711	\$14,926	\$20,215
GY9642	24" Dia x 27-3/4"H	Set of 2 Laminated Base Legs	Rectangle: 42"W x 96"L	\$4,797	\$4,930	\$5,755	\$4,787	\$5,967	\$5,463	\$6,552	\$10,457	\$12,314	\$20,350
GY9648	24" Dia x 27-3/4"H	Set of 2 Laminated Base Legs	Rectangle: 48"W x 96"L	\$4,812	\$4,939	\$5,791	\$4,800	\$6,006	\$5,468	\$6,592	\$11,257	\$15,113	\$22,221
GY9654	30" Dia x 27-3/4"H	Set of 2 Laminated Base Legs	Rectangle: 54"W x 96"L	\$5,993	\$6,114	\$6,981	\$5,983	\$7,162	\$7,754	\$9,113	\$12,911	\$16,121	\$25,049
GY9660	30" Dia x 27-3/4"H	Set of 2 Laminated Base Legs	Rectangle: 60"W x 96"L	\$6,010	\$6,122	\$7,013	\$5,999	\$7,195	\$7,808	\$9,198	\$13,711	\$16,182	\$26,928
GY10842	24" Dia x 27-3/4"H	Set of 2 Laminated Base Legs	Rectangle: 42"W x 108"L	\$5,324	\$5,739	\$6,601	\$5,313	\$6,462	\$7,447	\$9,068	\$11,355	\$15,553	\$22,333
GY10848	24" Dia x 27-3/4"H	Set of 2 Laminated Base Legs	Rectangle: 48"W x 108"L	\$5,342	\$5,748	\$6,633	\$5,332	\$6,474	\$7,456	\$9,109	\$12,282	\$16,164	\$24,455
GY10854	30" Dia x 27-3/4"H	Set of 2 Laminated Base Legs	Rectangle: 54"W x 108"L	\$6,198	\$6,620	\$7,496	\$6,189	\$7,335	\$9,353	\$11,041	\$14,091	\$17,187	\$27,433



GEOMETRY CYLINDER

Product Number	Size (1 Base)	Features	Top Shape/Size	Top Style									
				1003	1001	1901	1104	2014	3008	4014	5121	7021**	9021**
				Top: Lam	Lam	Lam	Lam	Lam	Veneer	Veneer	Solid Wood	Corian	Corian Quartz
Edge: 3mm	Self	Knife/ Painted	T-Mold	Solid Wd Edge	3mm Wd	Solid Wd	Solid Wood	Corian	Corian Quartz				
GY10860	30" Dia x 27-3/4"H	Set of 2 Laminated Base Legs	Rectangle: 60"W x 108"L	\$6,214	\$7,166	\$7,525	\$6,192	\$7,364	\$9,428	\$11,149	\$14,990	\$17,362	\$29,685
GY12042	24" Dia x 27-3/4"H	Set of 2 Laminated Base Legs	Rectangle: 42"W x 120"L	\$5,354	\$5,776	\$6,655	\$5,342	\$6,513	\$7,561	\$9,277	\$12,050	\$16,027	\$24,262
GY12048	24" Dia x 27-3/4"H	Set of 2 Laminated Base Legs	Rectangle: 48"W x 120"L	\$5,371	\$5,785	\$6,687	\$5,359	\$6,524	\$7,575	\$9,296	\$13,049	\$16,674	\$26,617
GY12054	30" Dia x 27-3/4"H	Set of 2 Laminated Base Legs	Rectangle: 54"W x 120"L	\$6,227	\$6,655	\$7,550	\$6,217	\$7,386	\$9,367	\$11,121	\$15,236	\$17,794	\$29,840
GY12060	30" Dia x 27-3/4"H	Set of 2 Laminated Base Legs	Rectangle: 60"W x 120"L	\$6,243	\$7,212	\$7,580	\$6,222	\$7,415	\$9,442	\$11,230	\$15,300	\$17,925	\$32,338
GY13242	24" Dia x 27-3/4"H	Set of 2 Laminated Base Legs	Rectangle: 42"W x 132"L*	\$7,063	\$6,980	\$8,616	\$6,974	\$8,195	\$8,802	\$10,905	\$14,957	\$17,735	\$27,683
GY13248	24" Dia x 27-3/4"H	Set of 2 Laminated Base Legs	Rectangle: 48"W x 132"L*	\$7,096	\$6,988	\$8,679	\$6,994	\$8,235	\$8,808	\$10,945	\$16,110	\$18,386	\$30,272
GY13254	30" Dia x 27-3/4"H	Set of 2 Laminated Base Legs	Rectangle: 54"W x 132"L	\$6,781	\$7,293	\$8,336	\$6,767	\$7,889	\$9,381	\$11,552	\$16,911	\$18,307	\$32,635
GY13260	30" Dia x 27-3/4"H	Set of 2 Laminated Base Legs	Rectangle: 60"W x 132"L	\$6,803	\$7,931	\$8,377	\$6,787	\$7,919	\$9,595	\$11,660	\$18,228	\$18,442	\$35,224
GY14442	24" Dia x 27-3/4"H	Set of 2 Laminated Base Legs	Rectangle: 42"W x 144"L*	\$7,306	\$7,086	\$9,076	\$7,074	\$8,330	\$8,843	\$11,014	\$15,690	\$18,648	\$29,588
GY14448	24" Dia x 27-3/4"H	Set of 2 Laminated Base Legs	Rectangle: 48"W x 144"L*	\$7,342	\$7,096	\$9,146	\$7,107	\$8,383	\$8,874	\$11,077	\$16,941	\$19,348	\$32,412
GY14454	30" Dia x 27-3/4"H	Set of 2 Laminated Base Legs	Rectangle: 54"W x 144"L*	\$8,232	\$8,561	\$10,035	\$8,225	\$9,257	\$10,635	\$12,873	\$19,043	\$20,494	\$36,196
GY14460	30" Dia x 27-3/4"H	Set of 2 Laminated Base Legs	Rectangle: 60"W x 144"L*	\$8,257	\$9,206	\$10,084	\$8,253	\$9,290	\$10,710	\$12,982	\$20,293	\$20,637	\$39,096
GY15642	24" Dia x 27-3/4"H	Set of 3 Laminated Base Legs	Rectangle: 42"W x 156"L	\$8,033	\$7,797	\$9,899	\$7,787	\$9,103	\$10,106	\$12,606	\$17,559	\$21,623	\$32,095

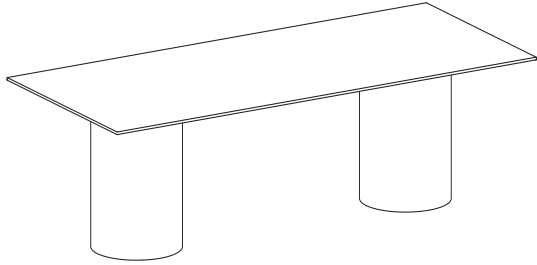
*Includes (2) Steel Stretchers in between each base legs



GEOMETRY CYLINDER

Product Number	Size (1 Base)	Features	Top Shape/Size	Top Style									
				1003	1001	1901	1104	2014	3008	4014	5121	7021**	9021**
				Top: Lam	Lam	Lam	Lam	Lam	Veneer	Veneer	Solid Wood	Corian	Corian Quartz
Edge:	3mm	Self	Knife/ Painted	T-Mold	Solid Wd Edge	3mm Wd	Solid Wd	Solid Wood	Corian	Corian Quartz			
GY15648	24" Dia x 27-3/4"H	Set of 3 Laminated Base Legs	Rectangle: 48"W x 156"L	\$8,071	\$7,806	\$9,982	\$7,824	\$9,171	\$10,113	\$12,647	\$18,929	\$21,758	\$35,153
GY15654	30" Dia x 27-3/4"H	Set of 2 Laminated Base Legs	Rectangle: 54"W x 156"L*	\$8,599	\$8,763	\$10,667	\$8,591	\$9,672	\$12,344	\$14,912	\$20,626	\$22,281	\$38,653
GY15660	30" Dia x 27-3/4"H	Set of 2 Laminated Base Legs	Rectangle: 60"W x 156"L*	\$8,667	\$9,431	\$10,719	\$8,622	\$9,723	\$12,442	\$15,043	\$21,996	\$22,640	\$41,923
GY16842	24" Dia x 27-3/4"H	Set of 3 Laminated Base Legs	Rectangle: 42"W x 168"L	\$8,101	\$7,858	\$10,067	\$7,851	\$9,220	\$10,255	\$12,823	\$18,257	\$22,103	\$33,944
GY16848	24" Dia x 27-3/4"H	Set of 3 Laminated Base Legs	Rectangle: 48"W x 168"L	\$8,142	\$7,868	\$10,141	\$7,887	\$9,302	\$10,262	\$12,863	\$19,724	\$22,254	\$37,232
GY16854	30" Dia x 27-3/4"H	Set of 2 Laminated Base Legs	Rectangle: 54"W x 168"L*	\$9,111	\$9,072	\$11,118	\$9,103	\$10,227	\$12,605	\$15,236	\$21,762	\$22,998	\$41,215
GY16860	30" Dia x 27-3/4"H	Set of 2 Laminated Base Legs	Rectangle: 60"W x 168"L*	\$9,141	\$9,759	\$11,175	\$9,136	\$10,298	\$12,700	\$15,367	\$23,228	\$23,317	\$44,568
GY18042	24" Dia x 27-3/4"H	Set of 3 Laminated Base Legs	Rectangle: 42"W x 180"L	\$8,165	\$7,908	\$10,223	\$7,904	\$9,319	\$10,271	\$12,903	\$18,954	\$22,501	\$35,786
GY18048	24" Dia x 27-3/4"H	Set of 3 Laminated Base Legs	Rectangle: 48"W x 180"L	\$8,204	\$7,919	\$10,300	\$7,940	\$9,418	\$10,277	\$12,944	\$20,518	\$22,656	\$39,305
GY18054	30" Dia x 27-3/4"H	Set of 3 Laminated Base Legs	Rectangle: 54"W x 180"L	\$10,101	\$9,827	\$12,195	\$10,087	\$11,254	\$13,324	\$16,025	\$23,361	\$24,201	\$44,254
GY18060	30" Dia x 27-3/4"H	Set of 3 Laminated Base Legs	Rectangle: 60"W x 180"L	\$10,134	\$10,528	\$12,255	\$10,123	\$11,347	\$13,423	\$16,155	\$24,925	\$24,463	\$47,842
GY19242	24" Dia x 27-3/4"H	Set of 3 Laminated Base Legs	Rectangle: 42"W x 192"L	\$8,436	\$8,162	\$10,592	\$8,287	\$9,620	\$10,283	\$12,984	\$19,652	\$22,866	\$37,711
GY19248	24" Dia x 27-3/4"H	Set of 3 Laminated Base Legs	Rectangle: 48"W x 192"L	\$8,483	\$8,178	\$10,682	\$8,330	\$9,750	\$10,292	\$13,025	\$21,313	\$23,031	\$41,466
GY19254	30" Dia x 27-3/4"H	Set of 3 Laminated Base Legs	Rectangle: 54"W x 192"	\$10,190	\$9,903	\$12,383	\$10,170	\$11,375	\$13,338	\$16,105	\$24,252	\$24,586	\$46,661
GY19260	30" Dia x 27-3/4"H	Set of 3 Laminated Base Legs	Rectangle: 60"W x 192"L	\$10,225	\$10,628	\$12,448	\$10,214	\$11,496	\$13,435	\$16,236	\$25,914	\$25,011	\$50,059

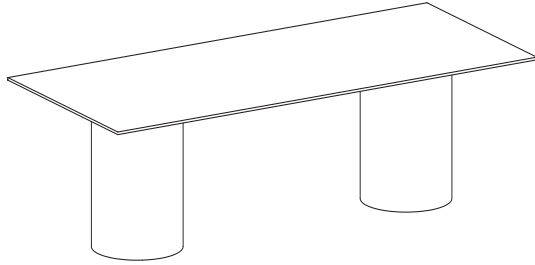
*Includes (2) Steel Stretchers in between each base legs



GEOMETRY CYLINDER

Product Number	Size (1 Base)	Features	Top Shape/Size	Top Style										
				1003	1001	1901	1104	2014	3008	4014	5121	7021**	9021**	
				Top: Lam	Lam	Lam	Lam	Lam	Veneer	Veneer	Solid Wood	Corian	Corian Quartz	
Edge:	3mm	Self	Knife/ Painted	T-Mold	Solid Wd Edge	3mm Wd	Solid Wd	Solid Wood	Corian	Corian Quartz				
GY20442	24" Dia x 27-3/4"H	Set of 3 Laminated Base Legs	Rectangle: 42"W x 204"L*	\$11,075	\$10,783	\$13,324	\$11,054	\$12,283	\$14,186	\$17,216	\$23,237	\$25,587	\$42,076	
GY20448	24" Dia x 27-3/4"H	Set of 3 Laminated Base Legs	Rectangle: 48"W x 204"L*	\$11,124	\$10,801	\$13,419	\$11,105	\$12,443	\$14,193	\$17,257	\$25,018	\$25,761	\$46,072	
GY20454	30" Dia x 27-3/4"H	Set of 3 Laminated Base Legs	Rectangle: 54"W x 204"L	\$10,250	\$9,967	\$12,553	\$10,234	\$11,477	\$14,941	\$18,036	\$25,725	\$24,979	\$49,168	
GY20460	30" Dia x 27-3/4"H	Set of 3 Laminated Base Legs	Rectangle: 60"W x 204"L	\$10,303	\$10,708	\$12,624	\$10,291	\$11,624	\$15,057	\$18,187	\$27,506	\$25,312	\$53,289	
GY21642	24" Dia x 27-3/4"H	Set of 3 Laminated Base Legs	Rectangle: 42"W x 216"L*	\$11,258	\$10,954	\$13,640	\$11,201	\$12,493	\$14,297	\$17,392	\$24,027	\$25,863	\$44,011	
GY21648	24" Dia x 27-3/4"H	Set of 3 Laminated Base Legs	Rectangle: 48"W x 216"L*	\$11,311	\$10,968	\$13,740	\$11,285	\$12,671	\$14,308	\$17,437	\$25,905	\$26,047	\$48,233	
GY21654	30" Dia x 27-3/4"H	Set of 3 Laminated Base Legs	Rectangle: 54"W x 216"L	\$10,364	\$10,047	\$12,791	\$10,336	\$11,600	\$14,951	\$18,114	\$26,617	\$25,135	\$51,472	
GY21660	30" Dia x 27-3/4"H	Set of 3 Laminated Base Legs	Rectangle: 60"W x 216"L	\$10,401	\$10,810	\$12,858	\$10,394	\$11,749	\$15,072	\$18,267	\$28,494	\$25,302	\$55,825	
GY22842	24" Dia x 27-3/4"H	Set of 3 Laminated Base Legs	Rectangle: 42"W x 228"L*	\$11,378	\$11,057	\$13,854	\$11,336	\$12,630	\$14,346	\$17,509	\$24,760	\$26,268	\$45,917	
GY22848	24" Dia x 27-3/4"H	Set of 3 Laminated Base Legs	Rectangle: 48"W x 228"L*	\$11,428	\$11,071	\$13,955	\$11,406	\$12,837	\$14,368	\$17,563	\$26,735	\$27,670	\$50,370	
GY22854	30" Dia x 27-3/4"H	Set of 3 Laminated Base Legs	Rectangle: 54"W x 228"L*	\$12,952	\$12,623	\$15,478	\$12,922	\$14,209	\$17,464	\$20,694	\$30,007	\$27,978	\$56,311	
GY22860	30" Dia x 27-3/4"H	Set of 3 Laminated Base Legs	Rectangle: 60"W x 228"L*	\$12,994	\$13,407	\$15,548	\$12,981	\$14,364	\$17,584	\$20,847	\$31,982	\$28,100	\$60,752	

*Includes (2) Steel Stretchers in between each base legs



GEOMETRY CYLINDER

Product Number	Size (1 Base)	Features	Top Shape/Size	Top Style									
				1003	1001	1901	1104	2014	3008	4014	5121	7021**	9021**
				Top: Lam	Lam	Lam	Lam	Lam	Veneer	Veneer	Solid Wood	Corian	Corian Quartz
Edge:	3mm	Self	Knife/ Painted	T-Mold	Solid Wd Edge	3mm Wd	Solid Wd	Solid Wood	Corian	Corian Quartz			
GY24042	24" Dia x 27-3/4"H	Set of 4 Laminated Base Legs	Rectangle: 42"W x 240"L	\$10,843	\$10,510	\$13,411	\$10,819	\$12,112	\$13,756	\$16,985	\$25,189	\$25,978	\$47,180
GY24048	24" Dia x 27-3/4"H	Set of 4 Laminated Base Legs	Rectangle: 48"W x 240"L	\$10,895	\$10,526	\$13,510	\$10,873	\$12,334	\$13,785	\$17,048	\$26,925	\$26,126	\$51,864
GY24054	30" Dia x 27-3/4"H	Set of 3 Laminated Base Legs	Rectangle: 54"W x 240"L*	\$13,068	\$12,728	\$15,683	\$13,049	\$14,341	\$17,515	\$20,811	\$30,935	\$28,293	\$58,684
GY24060	30" Dia x 27-3/4"H	Set of 3 Laminated Base Legs	Rectangle: 60"W x 240"L*	\$13,110	\$13,530	\$15,763	\$13,096	\$14,496	\$17,635	\$20,964	\$33,007	\$28,425	\$63,250

*Includes (2) Steel Stretchers in between each base legs