



FENTON

TABLES

Fenton is an occasional table with a metal base made up of four steel tubes paired with a top of your choice giving a modern and industrial look. The powder coated base allows you the freedom to go with a traditional black or add a pop of color. Fenton is a great occasional table perfect for any space!



TO ORDER, PLEASE SPECIFY:

- 1. Model Number
- 2. Quantity
- 3. Top Style & Shape
- 4. Top Finish & Grain Direction
- 5. Edge Finish
- 6. Base Finish
- 7. Upgrade Options

EXAMPLE:

FE3030 | 5 | 1003 Square | Walnut Heights long
| Walnut Heights | Proulx White | RC

This would signify an order of five Fenton tables that are 30" W x 30" L square with a Walnut Heights laminate top, Walnut Heights 3mm edge, Proulx white powder coat for the base, and round corners.

ABOUT FENTON

Fenton features a base with angled steel tubing made of 1" diameter 16GA steel tubing and comes standard with adjustable levelers. SurfaceTech products are constructed with high-quality, commercial grade plywoods and HPL laminates and veneers.

1. MODEL

Find the Model # in the pricing matrix found on page 4 which dictates shape and size of the booth selection.

2. QUANTITY

SurfaceTech has state-of-the-art manufacturing capabilities to produce and create furniture in small quantity up to mass-scale quantities.

3. TOP STYLE & SHAPE

Select a top style by indicating with the number below.



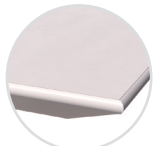
1003 - 3mm Laminate

1-1/4" high density PB core with high pressure laminate surface, 3mm edge with a phenolic backer sheet on the underneath side



1001 - Self Laminate

1-1/4" high density PB core with high pressure laminate surface, self edge in laminate with a phenolic backer balance sheet on the underneath side.



1901 - Knife Bottom Bevel PVC 3mm Edge Laminate

1-1/4" MDF core with high pressure laminate surface, 3mm edge with painted bottom bevel and on the underneath side.



3008 - 3mm Wood Edge Veneer

1-1/4" high density PB core with veneer surface, 3mm thick x 1-1/4" wood lumber band edge and a phenolic backer balance sheet on the underneath side. Comes standard in maple species with standard stain option.



5121 - Solid Wood

1-3/4" thick solid wood plank top with eased edge. Plank size random with maximum board width of 2-1/2". Comes standard in maple species with standard stain option.



7021 - Corian Solid Surface

1/2" thick corian solid surface with an eased edge on top of a 1-1/8" thick MDF bottom painted knife edge substrate and a base made with 1" Dia 16 GA steel tubing.



9021 - Quartz

2cm thick quartz with an eased edge on top of a 1-1/8" thick MDF bottom painted knife edge substrate and a base made with 1" Dia 16 GA steel tubing.

Fenton comes standard in either a square, round, recantgle, and oval shape. **+0%**



4. TOP FINISH & GRAIN DIRECTION

According to the top style selected in Step 3, please indicate the finish selected. Pricing includes Grade 1 selections. Below you can find the upgrade charge to select a different grade per finish type.

Laminate Grades

Apply % to 1003
Gr. 1..... Included
Gr. 2..... Add 4%
Gr. 3..... Add 8%
Gr. 4..... Add 13%
Gr. 5..... Add 40%
Gr. 6..... Add 53%

Corian Solid Surface Grades*

Apply % to 7021
Gr. 2..... Included
Gr. 3..... Add 6%
Gr. 4..... Add 17%
Gr. 6..... Add 40%
Gr. 7..... Add 51%

Corian Quartz Grades

Apply % to 9021
Gr. 1..... Included
Gr. 2..... Add 6%
Gr. 3..... Add 12%
Gr. 4..... Add 18%

Selection Options

To view current selection options by grade, please visit the resources page of our website at: www.surfacetech.com/resources

*Corian Solid Surface [Top 7021] pricing is based on Surfacetech Preferred Choice options. For non-preferred options, please call for quote.

Veneer & Wood Tops

Maple species with standard stain options are included in the price. If a non-maple species is needed, please call for pricing.

Grain Direction

Tops come standard with a grain direction going the long length of the table. Please call for pricing, if you want the grain to be ran along the short direction as that will require additional materials.



Long Direction



Short Direction

5. EDGE FINISH & TOP DETAILS

Depending on the Top Style selected in Step 3, an edge finish may need to be selected. 3MM and T-Mold edges are priced as standard options from our resource sheet only. Any other requests for different color options, would need to be quoted as a custom. Applicable finish options can be viewed at www.surfacetech.com/resources

6. BASE FINISH

Powder coat is standard for the base and Grade 3 is included in the pricelist.

Powder Coat Grades

Apply % to 1003
Gr. 3..... Included
Gr. 4..... Add 4%
Gr. 5..... Add 6%
Gr. 6..... Add 8%
Gr. 7..... Add 14%

7. UPGRADE OPTIONS

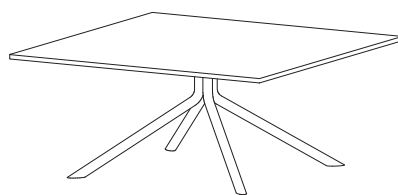
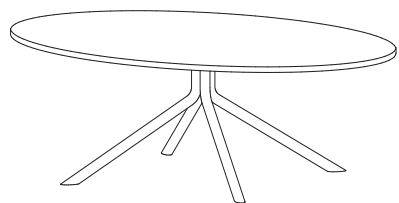
(RC) Rounded Corners.....Add \$20 per corner
3" Radius; Standard on top 1104

Custom Wood Stain:.....Add 15%
Apply percentages to 1003 Top price.

Call for custom pricing on these upgrade options:
Veneer Top - Non-Maple Species
(GT) Glass Top

OTHER INFO

Upgrade percentages are applied to the 1003 price and do not compound if there are multiple upgrades selected.



FENTON

				Top Style							
				1003	1001	1901	3008	5121	7021**	9021**	
Product Number	Size (1 Base)	Features	Top Shape/Size	Top: Lam	Lam	Lam	Veneer	Solid Wood	Corian	Corian Quartz	
				Edge: 3mm	Self	Knife/Painted	3mm Wd	Solid Wood	Corian	Corian Quartz	
Square Tops											
FE3030	28" Spread, 13"H	(4x) Angled Steel Tubing Legs/Frame, Top Plate	Square: 30" x 30"	\$1,968	\$1,919	\$2,379	\$2,596	\$2,781	\$3,614	\$4,497	
Round Tops											
FE30	28" Spread, 13"H	(4x) Angled Steel Tubing Legs/Frame, Top Plate	Round: 30" Dia	\$2,026	\$2,010	\$2,441	\$2,661	\$2,820	\$3,708	\$4,575	
FE36	28" Spread, 13"H	(4x) Angled Steel Tubing Legs/Frame, Top Plate	Round: 36" Dia	\$2,080	\$2,058	\$2,643	\$2,664	\$3,279	\$4,125	\$5,831	
Rectangle Tops											
FE3624	28" Spread, 13"H	(4x) Angled Steel Tubing Legs/Frame, Top Plate	Rectangle: 24"W x 36"L	\$1,964	\$1,911	\$2,374	\$2,591	\$2,739	\$3,604	\$4,398	
FE3628	28" Spread, 13"H	(4x) Angled Steel Tubing Legs/Frame, Top Plate	Rectangle: 28"W x 36"L	\$1,976	\$1,921	\$2,403	\$2,606	\$2,906	\$3,629	\$4,817	
FE4224	28" Spread, 13"H	(4x) Angled Steel Tubing Legs/Frame, Top Plate	Rectangle: 24"W x 42"L	\$1,981	\$1,922	\$2,455	\$2,608	\$2,906	\$3,645	N/A	
FE4228	28" Spread, 13"H	(4x) Angled Steel Tubing Legs/Frame, Top Plate	Rectangle: 28"W x 42"L	\$1,998	\$1,935	\$2,490	\$2,626	\$3,100	\$3,677	N/A	
Oval Tops											
FE3624O	28" Spread, 13"H	(4x) Angled Steel Tubing Legs/Frame, Top Plate	Oval: 24"W x 36"L	\$2,027	\$1,995	\$2,436	\$2,631	\$2,778	\$3,682	\$4,476	
FE3628O	28" Spread, 13"H	(4x) Angled Steel Tubing Legs/Frame, Top Plate	Oval: 28"W x 36"L	\$2,039	\$2,006	\$2,465	\$2,645	\$2,945	\$3,707	\$4,895	
FE4224O	28" Spread, 13"H	(4x) Angled Steel Tubing Legs/Frame, Top Plate	Oval: 24"W x 42"L	\$2,050	\$2,007	\$2,534	\$2,647	\$2,945	\$3,723	N/A	
FE4228O	28" Spread, 13"H	(4x) Angled Steel Tubing Legs/Frame, Top Plate	Oval: 28"W x 42"L	\$2,065	\$2,020	\$2,568	\$2,665	\$3,139	\$3,756	N/A	

**Includes 1-1/8" thick MDF bottom painted knife edge substrate.