

COUNCIL

TABLES



The Council table is an innovative spin on a classic conference room look. With the possibility to configure your tables in any shape, the Council table is perfect for a fast-paced, creative environment.



TO ORDER, PLEASE SPECIFY:

- 1. Model Number
- 2. Quantity
- 3. Top Style & Shape
- 4. Top Finish & Grain Direction
- 5. Edge Finish
- 6. Base Finish
- 7. Upgrade Options

EXAMPLE:

CL6054 | 5 | 1003 Rectangle | Walnut Heights long
| Walnut Heights | Designer White | PC

This would signify an order of five Council tables that are 54" W x 60" L rectangles with a Walnut Heights laminate top with the laminate grain running the long length of the table top, Walnut Heights 3mm edge, Designer White laminate for the base, and a power cutout.

ABOUT COUNCIL

Flip boxes and concealed casters set Council apart and make storage a breeze for these table systems. Council includes a cover shroud and two steel feet for each base leg as well as adjustable levelers. The tops are constructed with high-quality, commercial grade plywoods and HPL laminates and veneers.

1. MODEL

Find the Model # in the pricing matrix found on page 4, which dictates shape and size of the booth selection.

2. QUANTITY

SurfaceTech has state-of-the-art manufacturing capabilities to produce and create furniture in small quantity up to mass-scale quantities.

3. TOP STYLE & SHAPE

Select a top style by indicating with the number below.



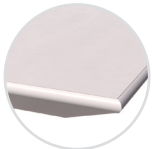
1003 - 3mm Laminate

1-1/4" high density PB core with high pressure laminate surface, 3mm edge with a phenolic backer sheet on the underneath side



1001 - Self Laminate

1-1/4" high density PB core with high pressure laminate surface, self edge in laminate with a phenolic backer balance sheet on the underneath side.



1901 - Knife Bottom Bevel PVC 3mm Edge Laminate

1-1/4" MDF core with high pressure laminate surface, 3mm edge with painted bottom bevel and on the underneath side.



1104 - T-Mold Laminate

1-1/4" high density PB core with high pressure flush laminate surface, with 1-1/4" hard rubber t-mold edge and a phenolic backer balance sheet on the underneath side. This table comes standard with 3" radius corners.



3008 - 3mm Wood Edge Veneer

1-1/4" high density PB core with veneer surface, 3mm thick x 1-1/4" wood lumber band edge and a phenolic backer balance sheet on the underneath side. Comes standard in maple species with standard stain option.

Council comes standard in a square or rectangle shape.



4. TOP FINISH & GRAIN DIRECTION

According to the top style selected in Step 3, please indicate the finish selected. Pricing includes Grade 1 selections. Below you can find the upgrade charge to select a different grade per finish type.

Laminate Grades

Apply % to 1003
Gr. 1..... Included
Gr. 2..... Add 4%
Gr. 3..... Add 7%
Gr. 4..... Add 12%
Gr. 5..... Add 36%
Gr. 6..... Add 48%

Selection Options

To view current selection options by grade, please visit the resources page of our website at: www.surfacetech.com/resources

Veneer & Wood Tops

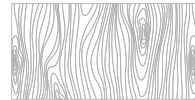
Maple species with standard stain options are included in the price. If a non-maple species is needed, please call for pricing.

Grain Direction

Tops come standard with a grain direction going the long length of the table. Please call for pricing, if you want the grain to be ran along the short direction as that will require additional materials.



Long Direction



Short Direction

5. EDGE FINISH & TOP DETAILS

Depending on the Top Style selected in Step 3, an edge finish may need to be selected. 3MM and T-Mold edges are priced as standard options from our resource sheet only. Any other requests for different color options, would need to be quoted as a custom. Applicable finish options can be viewed at www.surfacetech.com/resources

6. BASE & SHROUD FINISH

Bases includes glides on one leg and concealed casters on the other.

Laminate is standard for the base and Gr 1 is included in the pricelist.

Powder Coat Grades

Apply % to 1003
Gr. 3..... Included
Gr. 4..... Add 1%
Gr. 5..... Add 2%
Gr. 6..... Add 3%
Gr. 7..... Add 4%

7. UPGRADE OPTIONS

(G) Table Top Grommet.....Add \$90
available in black with 3-1/8" diameter, excludes quartz

(PC) Power Cutout.....Add \$65 ea.
price per cutout, excludes quartz

(MV) Maple Veneer Base Legs.....Add 20%.
standard stain option

Call for custom pricing on these upgrade options:

(MB) Metal Laminate Base Shroud

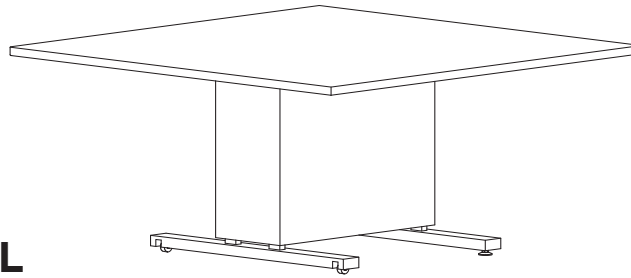
(VB) Veneer - Non-Maple Species

OTHER INFO

Upgrade percentages are applied to the 1003 price and do not compound if there are multiple upgrades selected.

Tables include flip-top mechanism. Double flip-top bases include a connector rod. Not compatible with solid wood, solid surface, stone or glass tops.

Each top includes two ganging mechanisms on two sides. Black plastic finish.



COUNCIL

Product Number	Size (1 Base)	Features	Top Shape/Size	Top Style				
				1003	1001	1901	1104	3008
				Top: Lam	Lam	Lam	Lam	Veneer
Edge:	3mm	Self	Knife/ Painted	T-Mold	3mm Wd			
CL5454	30"W x 12"D Shroud, 36"L Feet, 27-3/4"H	(1x) Base Leg w/Laminated Cover Shroud, (1x) Flip Box, Concealed Casters in one leg, Ganging on two sides	Square: 54" Sq	\$7,681	\$7,622	\$8,245	\$7,675	\$9,735
CL6054	30"W x 12"D Shroud, 36"L Feet, 27-3/4"H	(1x) Base Leg w/Laminated Cover Shroud, (1x) Flip Box, Concealed Casters in one leg, Ganging on two sides	Rectangle: 54"W x 60"L	\$7,725	\$7,665	\$8,319	\$7,719	\$9,768
CL6060	30"W x 12"D Shroud, 36"L Feet, 27-3/4"H	(1x) Base Leg w/Laminated Cover Shroud, (1x) Flip Box, Concealed Casters in one leg, Ganging on two sides	Square: 60" Sq	\$7,934	\$8,070	\$8,663	\$7,928	\$9,803
CL7254	40"W x 12"D Shroud, 36"L Feet, 27-3/4"H	(1x) Base Leg w/Laminated Cover Shroud, (2x) Flip Boxes, Concealed Casters in one leg, Connector Rod, Ganging on two sides	Rectangle: 54"W x 72"L	\$9,019	\$8,866	\$9,899	\$9,015	\$10,912
CL7260	40"W x 12"D Shroud, 36"L Feet, 27-3/4"H	(1x) Base Leg w/Laminated Cover Shroud, (2x) Flip Boxes, Concealed Casters in one leg, Connector Rod, Ganging on two sides	Rectangle: 60"W x 72"L	\$9,036	\$9,141	\$9,970	\$9,031	\$10,964
CL8454	52"W x 12"D Shroud, 36"L Feet, 27-3/4"H	(1x) Base Leg w/Laminated Cover Shroud, (2x) Flip Boxes, Concealed Casters in one leg, Connector Rod, Ganging on two sides	Rectangle: 54"W x 84"L	\$9,317	\$9,143	\$10,307	\$9,308	\$11,067
CL8460	52"W x 12"D Shroud, 36"L Feet, 27-3/4"H	(1x) Base Leg w/Laminated Cover Shroud, (2x) Flip Boxes, Concealed Casters in one leg, Connector Rod, Ganging on two sides	Rectangle: 60"W x 84"L	\$9,334	\$9,449	\$10,380	\$9,324	\$11,118