

# CHAT O

## TABLES

Looking for a table that can do it all? While the Chat-O table is best known as a fantastic way to gather a small group, it can also be configured in a variety of ways: stand-alone, back-to-back, or attached to a media wall.



### **TO ORDER, PLEASE SPECIFY:**

- 1. Model Number
- 2. Quantity
- 3. Top Style & Shape
- 4. Top Finish & Grain Direction
- 5. Edge Finish
- 6. Base Finish
- 7. Upgrade Options

### **EXAMPLE:**

CO6036 | 2 | 1003 Rectangle | Walnut Height  
Walnut Height 3mm | Walnut Height | PC

This would signify an order of two Chat O tables that are 36" W x 60" L rectangles with a Walnut Height laminate top, Walnut Heights 3mm edge, Walnut Height laminate base, and a power cutout.

## ABOUT CHAT-O

Chat-O includes a unique 18" wide base design in the shape of an "O". It is constructed with high-quality, commercial grade plywoods and HPL laminates and veneers. The base system also includes adjustable levelers.

### 1. MODEL #

Find the Model # in the pricing matrix found on page 4 which dictates shape and size of the booth selection.

### 2. QUANTITY

SurfaceTech has state-of-the-art manufacturing capabilities to produce and create furniture in small quantity up to mass-scale quantities.

### 3. TOP STYLE & SHAPE

Select a top style by indicating with the number below.



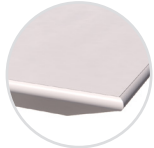
#### 1003 - 3mm Laminate

1-1/4" high density PB core with high pressure laminate surface, 3mm edge with a phenolic backer sheet on the underneath side



#### 1001 - Self Laminate

1-1/4" high density PB core with high pressure laminate surface, self edge in laminate with a phenolic backer balance sheet on the underneath side.



#### 1901 - Knife Bottom Bevel PVC 3mm Edge Laminate

1-1/4" MDF core with high pressure laminate surface, 3mm edge with painted bottom bevel and on the underneath side.



#### 1104 - T-Mold Laminate

1-1/4" high density PB core with high pressure flush laminate surface, with 1-1/4" hard rubber t-mold edge and a phenolic backer balance sheet on the underneath side. This table comes standard with 3" radius corners.



#### 3008 - 3mm Wood Edge Veneer

1-1/4" high density PB core with veneer surface, 3mm thick x 1-1/4" wood lumber band edge and a phenolic backer balance sheet on the underneath side. Comes standard in maple species with standard stain option.

Chat-Media comes standard in a rectangle shape.

(TT) Upgradable Trapezoid Shape.



+0% to the price



+5% to 1003 price

### 4. TOP FINISH & GRAIN DIRECTION

According to the top style selected in Step 3, please indicate the finish selected. Pricing includes Grade 1 selections. Below you can find the upgrade charge to select a different grade per finish type.

Wood tops include standard stain options. For a non-standard stain, please see options.

#### Laminate Grades

Apply % to 1003

- Gr. 1..... Included
- Gr. 2..... Add 6%
- Gr. 3..... Add 17%
- Gr. 4..... Add 21%
- Gr. 5..... Add 65%
- Gr. 6..... Add 86%

#### Material Selection Options

To view current material selection options by grade, please visit the resources page of our website at: [www.surfacestech.com/resources](http://www.surfacestech.com/resources)

#### Veneer & Wood Tops - 3008

Maple species with standard stain options are included in the price. If a non-maple species is needed, please call for pricing.

### Grain Direction

Tops come standard with a grain direction going the long length of the table. Please call for pricing, if you want the grain to be ran along the short direction as that will require additional materials.



Long Direction



Short Direction

### 5. EDGE FINISH & TOP DETAILS

Depending on the Top Style selected in Step 3, an edge finish may need to be selected. 3MM and T-Mold edges are priced as standard options from our resource sheet only. Any other requests for different color options, would need to be quoted as a custom. Applicable finish options can be viewed at [www.surfacestech.com/resources](http://www.surfacestech.com/resources)

### 6. BASE FINISH

The base is consisted of open laminated base with angled end. See laminate grade price adjustments below.

#### Laminate Grades

Apply % to 1003

- Gr. 1..... Included
- Gr. 2..... Add 6%
- Gr. 3..... Add 17%
- Gr. 4..... Add 21%
- Gr. 5..... Add 65%
- Gr. 6..... Add 86%

**7. UPGRADE OPTIONS**

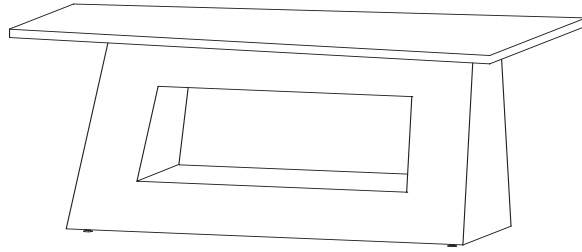
- (G) Table Top Grommet.....Add \$90  
available in black with 3-1/8" diameter
  
- (PC) Power Cutout.....Add \$65 ea.  
price per cutout, excludes quartz
  
- (D) Cable Access Door .....Add \$180  
w/ Touch Latch
  
- (CT) Counter Height .....Add \$275  
36" H
  
- (BH) Bar Height .....Add \$485  
42" H
  
- (RC) Rounded Top Corner.....Add \$20 per corner  
3" Radius, Standard on 1104
  
- (MV) Maple Veneer Finish.....Add \$2,800  
Standard Stain
  
- Custom Wood Stain .....Add 15%

Call for custom pricing on these upgrade options:

- (VB) Veneer - Non-Maple Species
- (MB) Metal Laminate Base

**OTHER INFO**

Upgrade percentages are applied to the 1003 price and do not compound if there are multiple upgrades selected.



## CHAT-O

Product Number	Size (1 Base)	Features	Top Shape/Size	Top Style					
					1003	1001	1901	1104	3008
				Top:	Lam	Lam	Lam	Lam	Veneer
				Edge:	3mm	Self	Knife/ Painted	T-Mold	3mm Wd
CO6036	48"L x 18"D x 27-3/4"H	Open Laminated Base w/Angled End	Rectangle: 36"W x 60"L	\$4,660	\$4,558	\$5,276	\$4,653	\$5,286	
CO6048	48"L x 18"D x 27-3/4"H	Open Laminated Base w/Angled End	Rectangle: 48"W x 60"L	\$4,673	\$4,824	\$5,289	\$4,665	\$5,298	
CO7236	48"L x 18"D x 27-3/4"H	Open Laminated Base w/Angled End	Rectangle: 36"W x 72"L	\$4,730	\$4,615	\$5,408	\$4,722	\$5,339	
CO7248	48"L x 18"D x 27-3/4"H	Open Laminated Base w/Angled End	Rectangle: 48"W x 72"L	\$4,743	\$4,880	\$5,420	\$4,735	\$5,351	
CO7254	60"L x 22"D x 27-3/4"H	Open Laminated Base w/Angled End	Rectangle: 54"W x 72"L	\$5,684	\$5,558	\$6,366	\$5,673	\$7,374	
CO8454	60"L x 22"D x 27-3/4"H	Open Laminated Base w/Angled End	Rectangle: 54"W x 84"L	\$5,766	\$5,619	\$6,503	\$5,754	\$7,421	