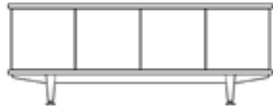


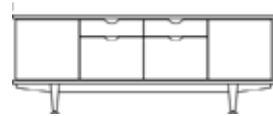
Standard Options



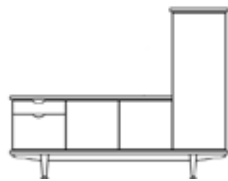
Size	Model code	Bamboo (-B)
18x72x29	1F-PLAT-2DCM-FCT	\$6,086



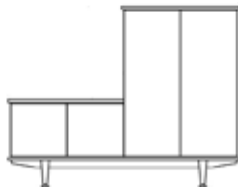
Size	Model code	Bamboo (-B)
18x72x29	1F-PLAT-SCM-BD-FD-DCM-FCT	\$6,865



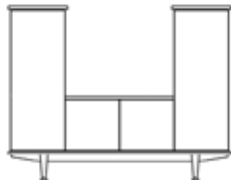
Size	Model code	Bamboo (-B)
18x72x29	1F-PLAT-2SCM-2BD-2FD-FCT	\$7,644



Size	Model code	Bamboo (-B)
18x72x60	1F-PLAT-BD-FD-DCM-SWM-TQCT-SWT	\$7,955



Size	Model code	Bamboo (-B)
18x72x60	1F-PLAT-DCM-DWM-HCT-DWT	\$7,085



Size	Model code	Bamboo (-B)
18x72x60	1F-PLAT-2SWM-DCM-2SWT-HCT	\$8,644

Credenza Options

Bamboo credenza only available in Amber Edge or Flat Grain

Edge Options



Beveled Wood Edge



Bullnose Wood Edge



Knife Wood Edge

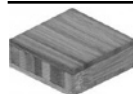


Square Wood Edge

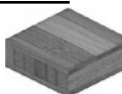


Waterfall Wood Edge

Bamboo Options



Edge Grain



Flat Grain



Havana



Sahara



Neopolitan

Extras

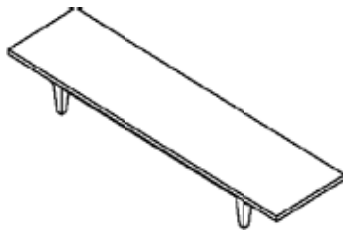
- Metal insert...\$50
- Table locks ..\$116
- Custom cut out....\$210
- Grommets\$60
- Self-adjusting glides\$40
- Undertable Wire management\$75
- Vertical Wire management\$25

Bamboo Collection

Modular Options

Bamboo Credenza

Step 1: All Credenzas must include a platform

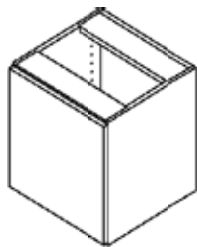


Size	Model code	Bamboo (-B)
72x10	PLAT	\$1,502

Credenza Options

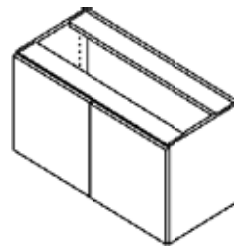
Bamboo credenza only available in Amber Edge or Flat Grain

Step 2: Choose components



Single Credenza Module

Size	Model code	Bamboo (-B)
17x18x18	SCM	\$1,186



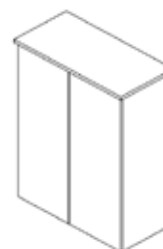
Double Credenza Module

Size	Model code	Bamboo (-B)
17x35x18	DCM	\$1,661



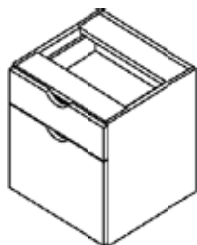
Single Wardrobe Module

Size	Model code	Bamboo (-B)
17x18x49	SWM	\$1,729



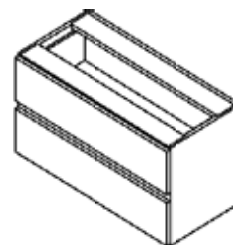
Double Wardrobe Module

Size	Model code	Bamboo (-B)
17x35x49	DWM	\$2,336



Box Drawer - File Drawer Unit

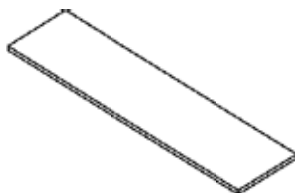
Size	Model code	Bamboo (-B)
17x18x18	BD-FD	\$1,254



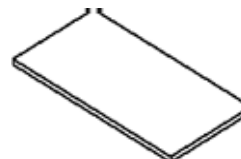
Double Box Drawer Unit

Size	Model code	Bamboo (-B)
17x35x18	DBD	\$1,650

Step 3: Select the coordinating top



Size	Model code	Bamboo (-B)
18x72	FCT	\$1,262
18x54	TQCT	\$1,239
18x35	HCT	\$793



Size	Model code	Bamboo (-B)
18x35	MCT	\$793
18x19	SWT	\$570
18x36	DWT-	\$800

Edge Options



Beveled Wood Edge



Bullnose Wood Edge



Knife Wood Edge

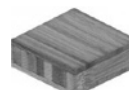


Square Wood Edge



Waterfall Wood Edge

Standard Bamboo Options



Edge Grain



Flat Grain

Extras

Metal insert...\$50
 Table locks ..\$116
 Custom cut out....\$210
 Grommets\$60
 Self-adjusting glides\$40
 Undertable Wire management ..\$75
 Vertical Wire management\$25