

HAVANA



Surfacetech

ENVIRONMENTAL ATTRIBUTES

- Cores made of 100% recycled material
- Laminates and backers GREENGUARD® certified
- Veneers meet FSC standards
- Can contribute to LEED points

WARRANTY

- Limited Lifetime Warranty

GENERAL DIMENSIONS

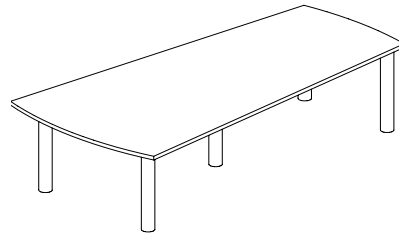
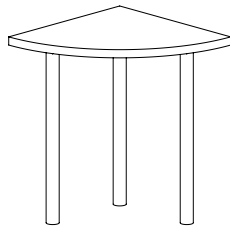
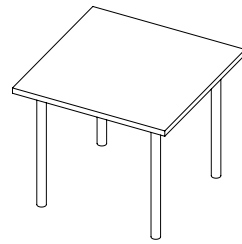
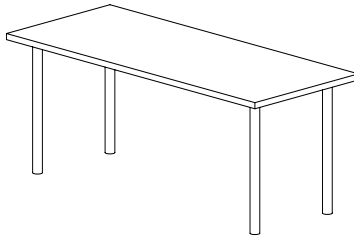
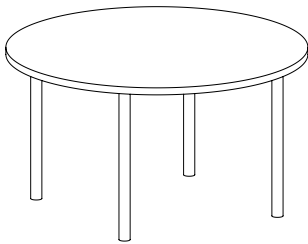
- Width: 24 - 288 inches
- Depth: 18 - 60 inches
- Height: 16 - 42 inches



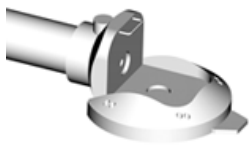
HAVANA COLLECTION

Havana post legs offer a simple and cost effective solution for any setting. Legs are available in several colors. Many of the tables are available as quick-ship items.

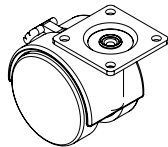
STANDARDS



OPTIONS



folding mechanism



casters

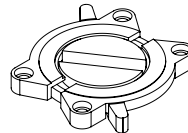


table locks



height adjustment

- fabric modesty panel
- laminate modesty panel
- metal modesty panel
- modesty panel wire management
- under table wire management
- vertical wire management
- grommets
- threaded inserts
- shorter height
- taller height
- self adjusting glides

Surfacetech

www.surfacetech.com | (800) 241-2982 | fax (816) 231-1185 | 7106 E. Truman Rd. Kansas City, MO