

# BILLBOARD



Surfacetech

## ENVIRONMENTAL ATTRIBUTES

- Cores made of 100% recycled material
- Laminates and backers GREENGUARD® certified
- Veneers meet FSC standards
- Can contribute to LEED points

## WARRANTY

- Limited Lifetime Warranty

## GENERAL TABLE DIMENSIONS

- Width: 36 - 72 inches
- Depth: 24 - 30 inches

## DOCKING STATION DIMENSIONS

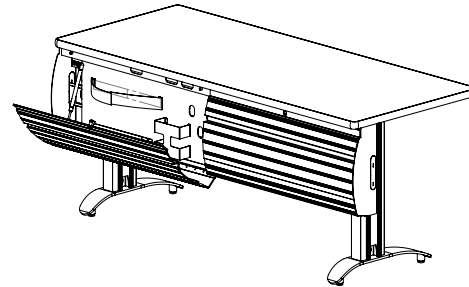
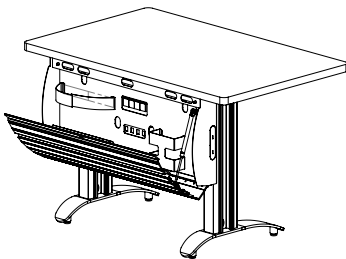
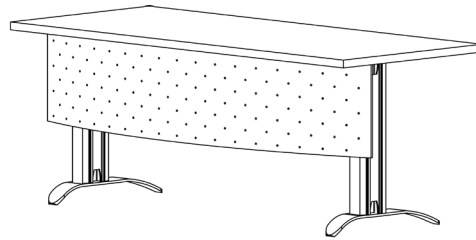
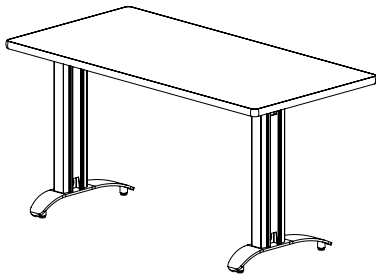
- Width: 36, 60 and 72 inches



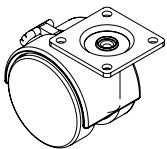
## BILLBOARD COLLECTION AND DOCKING STATION

Designed with data security in mind, the Billboard collection and Docking Station provides a physical barrier against computer theft. Built from aluminum extrusions and cold-rolled steel, the Billboard collection and Docking Station provides style and function.

## STANDARDS



## OPTIONS



casters

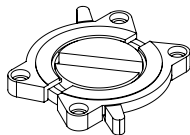


table locks

- fabric modesty panel
- laminate modesty panel
- metal modesty panel
- modesty panel wire management
- under table wire management
- vertical wire management
- grommets
- threaded inserts
- self adjusting glides
- inserts available in acrylic, laminate, metal laminate and veneer

# Surfacetech

www.surfacetech.com | (800) 241-2982 | fax (816) 231-1185 | 7106 E. Truman Rd. Kansas City, MO