
Core Construction and Backer

Particle Board

Surfacetech uses Industrial, ANSI Grade M-2 Minimum, 1-1/8" thick particle board for construction of work surfaces. Density for all particle board ranges from 47 to 51 pounds. All particle board meets or exceeds ANSI standard A208.1-1999. All Surfacetech cores, the largest portion of its product, meet emission requirements for California Air Regulation Board Phase II. Surfacetech cores also are considered Environmentally Preferable Products (EPP) products by the Composite Panel Association. All EPP products must contain 100 percent recycled or recovered fiber content. Also, formaldehyde emissions from unfinished EPP particle board must be less than or equal to 0.18 ppm.

No added urea formaldehyde (NAUF) particle boards are available upon request. Call 1-800-241-2982 for pricing.

Lightweight Ply

Surfacetech offers 3/4" Lightweight Plywood as an alternative to particle board. Lightweight plywood laminated cores weigh approximately 3 pounds per square foot, which is more than 30 percent less than particle board.

Backer

Surfacetech, on laminate and veneer work surfaces, uses balanced backer that is manufactured by impregnating Kraft liner board with a polymer resin. Surfacetech backers are all formaldehyde free and are GREENGUARD® Certified.

Adhesive

Surfacetech uses Polyvinyl Acetate (PVA) glue to adhere laminate to its cores. The glue is water based and has no added urea formaldehyde (NAUF). Surfacetech uses aliphatic resin glue to adhere veneer to cores. The glue is similar to the yellow wood glue many people use as children.

ANSI/BIFMA

Surfacetech certifies all work surfaces meet or exceed applicable ANSI/BIFMA standards and testing.

Surface Options

Laminate

Surfacetech offers work surfaces made with post-form grade, high pressure plastic laminate. Most standard laminates do not have up-charge costs and are typically available at standard lead times. Nonstandard laminates may require additional lead time and are subject to an additional charge. Call 1-800-241-2982 for laminate questions.

Surfacetech offers laminate from the following manufacturers:

Formica: Standard finishes – -58 (matte finish)

Nevamar: Standard finishes – T textured, V Velvet

Pionite: Standard finishes – N (suede)

Wilsonart: Standard finishes – -60 (matte), -38 (Fine Velvet Texture)

Other laminate brands are available. Call 1-800-241-2982 for laminate questions.

Surfacetech offers the following Wilsonart laminates as part of its quick-ship program:

Wood Grains:

- Bannister Oak 7806-60*
- Columbian Walnut 7943K-07*+
- Empire Mahogany 7122T-07*+
- Fusion Maple 7909-60*
- Versailles Anigre 7923-07*+
- Wild Cherry 7054-60*

***Indicates matching 3mm PVC edge available**

+Indicates nonstandard laminate charge applicable

Solids

- Black 1595-60*
- Frosty White 1573-60*
- North Sea D90-60*
- Shadow D96-60*
- Slate Grey D91-60

Patterns

- Canyon Zephyr 4842-60
- Carbon EV 4820-60
- Desert Zephyr 4841-60
- Evening Tigris 4674-60
- Graphite Nebula 4623-60*
- Grey Nebula 4622-60
- Oiled Soapstone 4882-38
- Pewter Brush 4779-60
- Tungsten EV 4814-60
- Twilight Zephyr 4845-60
- White Tigris 4783-60

All Surfacetech laminate work surfaces are GREENGUARD Certified®.



Surface options

Veneer

Surfacetech offers work surfaces made with No Black Line (NBL) veneer. Surfacetech uses the NBL, which has 3-ply construction, to avoid the black lines associated with phenolic and foil backers. All Surfacetech veneers have a nominal thickness of .040. All Surfacetech veneers have been harvested from forests that meet the stringent environmental, social and economic standards of the Forest Stewardship Council (FSC).

Surfacetech offers the following veneer species:

- Cherry
- Maple
- Oak

Several veneer species are available. Call 1-800-241-2982 for availability and details.

Surfacetech finishes veneers and wood edges using a nine step process. All veneers are stained by hand and sealed with a catalyzed varnish.

Surfacetech offers the following standard stains:

- Bannister Oak on Oak
- Columbian Walnut on Cherry
- Empire Mahogany on Cherry
- Fusion Maple on Maple
- Versailles Anigre on Cherry
- Wild Cherry on Cherry

Custom stains are available for \$445 list

Thermofoil

Surfacetech offers Thermofoil as a substitute to laminate on all work surfaces. Rigid Thermofoil (RTF) can be membrane-pressed or vacuum-formed to contoured surface profiles. The process eliminates the need for T-molding, edge banding, special edge treatments and, most importantly, visible seams. The seamless properties of Thermofoil result in high durability and ease of cleaning.

Thermofoil has the same price as laminate tops with T-mold edge. A one-time set up charge of \$180 list will be applied to orders with Boat, Racetrack and Telewedge tops.

Marmoleum by Forbo

Surfacetech offers Marmoleum as a substitute to laminate or veneer on all work surfaces. Made from natural raw materials, including linseed oil, pine rosin, and wood flour, Marmoleum is biodegradable and environmentally friendly. These natural properties also cause Marmoleum to strengthen over its life. When properly maintained, Marmoleum will retain its attractive appearance for decades. Marmoleum also helps create a healthier indoor environment. Naturally occurring anti-microbial properties inhibit the growth of many micro-organisms, including allergen producing dust mites and the MRSA strains of bacteria. Marmoleum has natural anti-static properties to repel dust and dirt, making it easier to maintain a clean and hygienic environment. Other benefits include impact sound reduction of six decibels.

For Marmoleum pricing, add \$11 list per square foot to the price of laminate tops with either T-Mold, 3mm PVC or wood edges.



Surface options

Bamboo by Plyboo



Surfacetech offers 1" thickness Flat Grain and Edge Grain Bamboo Plywood by Plyboo. Bamboo Plywood manufactured by Plyboo passes the California Section 01350 emissions test (the most stringent test currently administered) and is California Air Regulations Board Phase II compliant. The product has a No Added Urea Formaldehyde option and is certified under SCS Indoor Advantage Gold.

Turn to page 95 for Bamboo pricing and size availability.

Cambria



Surfacetech offers Cambria quartz as an alternative to granite, marble and other engineered stones. Cambria is the only quartz product manufactured in the US and is 93 percent pure quartz. Cambria has earned GREENGUARD Certification® and is certified by NSF International as safe for use as a food preparation surface. Cambria differentiates itself from other stones by being nonporous. Unlike granite, which is porous, no sealers, conditioners or waxes are required for maintenance.

For Cambria pricing, add \$165 list per square foot to laminate tops with 3mm edging.

Cambria is offered with the following edge styles:



Edge options

T-mold

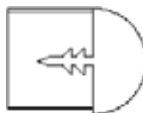
Surfacetech applies T-mold to work surfaces by pounding the edge into a groove cut into the work surface with an air hammer. Standard T-Mold colors include Black and Silver.



T-10 Flat Vinyl Edge
1/8" x 1-1/4" Flat Vinyl T-mold edge with 2" radius corners



T-14 Bumper Vinyl Edge
1/4" x 1-1/4" Bumper Vinyl T-Mold edge with 2" radius corners



T-35 Bullnose Vinyl Edge
1/2" x 1-1/4" Bullnose Vinyl T-Mold edge with 3" radius corners

Laminate Self Edge

Surfacetech uses the same laminate as the work surface for self edge. Surfacetech hot melt bands self edge to work surfaces.



T-13 Laminate Self Edge
1/16" x 1-1/4" laminate self edge with square corners and filed edges

3mm PVC

Surfacetech hot melt bands 3mm PVC edge to work surfaces and routes a 1/8" radius to the top and bottom. Standard 3mm PVC colors include: Aluminum, Black, Brown, Champagne, Evening Tigris, Frosty White, Graphite, Graphite Nebula, Silver Grey, Bannister Oak, Columbian Walnut, Fusion Maple, Empire Mahogany, Versaille Anigre and Wild Cherry



T-33 Flat PVC Edge
3mm x 1-1/4" Flat PVC edge with square corners and radiused

Edge Options

Veneer Self Edge

Surfacetech 3mm Veneer self edges match the work surface veneer species. Standard species include cherry, maple and oak. Surfacetech hot melt bands 3mm Veneer self edges to the work surfaces.



V13 Veneer Self Edge

3mm x 1-1/4" veneer self edge with square corners or radiuses

Wood Edge

Surfacetech shapes wood edges from raw lumber. Surfacetech wood edges match work surface veneer species. Standard species include cherry, maple and oak. Surfacetech applies a flat wood edge face to a flat work surface face for maximum strength. Surfacetech hand levels wood edge. All wood edges are finished using Surfacetech's nine-step finishing process.

Beveled (BV) Wood Edge

T63-BV 1-1/4" x 1-1/4"

Beveled-shaped Wood Edge

T64-BV 2" x 1-1/4"

Beveled-shaped Wood Edge

T65-BV 2" x 1-3/4"

Beveled-shaped Wood Edge



Bullnose (BN) Wood Edge

T63-BN 1-1/4" x 1-1/4"

Bullnose-shaped Wood Edge

T64-BN 2" x 1-1/4"

Bullnose-shaped Wood Edge

T65-BN 2" x 1-3/4"

Bullnose-shaped Wood Edge



Knife (KN) Wood Edge

T63-KN 1-1/4" x 1-1/4"

Knife-shaped Wood Edge

T64-KN 2" x 1-1/4"

Knife-shaped Wood Edge

T65-KN 2" x 1-3/4"

Knife-shaped Wood Edge



Ogee (OG) Wood Edge

T63-OG 1-1/4" x 1-1/4"

Ogee-shaped Wood Edge

T64-OG 2" x 1-1/4"

Ogee-shaped Wood Edge

T65-OG 2" x 1-3/4"

Ogee-shaped Wood Edge



Reeded (RD) Wood Edge

T63-RD 1-1/4" x 1-1/4"

Reeded-shaped Wood Edge

T64-RD 2" x 1-1/4"

Reeded-shaped Wood Edge

T65-RD 2" x 1-3/4"

Reeded-shaped Wood Edge



Square (SQ) Wood Edge

T63-SQ 1-1/4" x 1-1/4"

Square-shaped Wood Edge

T64-SQ 2" x 1-1/4"

Square-shaped Wood Edge

T65-SQ 2" x 1-3/4"

Square-shaped Wood Edge



Waterfall (WF) Wood Edge

T63-WF 1-1/4" x 1-1/4"

Waterfall-shaped Wood Edge

T64-WF 2" x 1-1/4"

Waterfall-shaped Wood Edge

T65-WF 2" x 1-3/4"

Waterfall-shaped Wood Edge



Surfacetech offers the following stains on Veneer Self Edge and Wood Edge:

- Bannister Oak on Oak
- Columbian Walnut on Cherry
- Empire Mahogany on Cherry
- Fusion Maple on Maple
- Versailles Anigre on Cherry
- Wild Cherry on Cherry

Custom stains are available for \$445 list

***Surfacetech uses T63 1-1/4" x 1-1/4" Wood Edge unless otherwise specified.**

Modesty Panel Options

Metal Modesty Panels – Plain and Perforated



Surfacetech offers powder-coated, 20-gauge metal modesty panels in two styles: a plain, smooth front and a perforated front consisting of 3/16" diameter holes spaced every 3-1/2". Surfacetech metal modesty panels have a lip at the top for mounting to the bottom of the work surface.



Modesty Panel Wire Raceway

Surfacetech offers a bolt-on metal modesty panel wire raceway with metal modesty panels.

Surfacetech offers metal modesty panels in the following powder-coat finishes:

- Black
- Black Wrinkle
- Brown
- Champagne Metallic
- Graphite
- Graphite Metallic
- Inner Tone
- Inner Tone Light
- Light Neutral
- Medium Tone
- Silver
- Silver Metallic

Fabric Modesty Panel

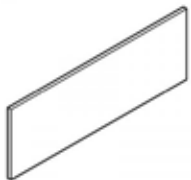


Surfacetech offers a fabric modesty panel that serves the dual purpose of a full-service modesty along with a hidden pouch to hold as many wires as needed. The modesty panel consists of a mesh fabric and a liner that is fitted around a sturdy steel frame to maintain its shape. The modesty panel is attached to the work surface using a supplied hardware package. The mounting hardware allows the panel to pivot for folding or nesting bases.

Surfacetech offers fabric modesty panels in the following colors:

- Black
- Silver

Laminate Modesty Panel



Surfacetech uses Industrial, ANSI Grade M-2 Minimum, 3/4" thick particle board for construction of modesty panels for fixed and folding base tables. Surfacetech laminates both sides of the modesty panels with high pressure laminates. Surfacetech hot melt bands 3mm PVC edge to laminated modesty panels and routes a 1/8" radius to the top and bottom. Surfacetech laminated modesty panels have square corners. Surfacetech laminated modesty panels have a total 13/16" thickness. Total height for laminated modesty panels on fixed tables is a nominal 9". Total height for laminated modesty panels on folding tables in a nominal 6-1/2". Surfacetech laminate modesty panels are GREENGUARD® Certified.

Nesting Modesty Panel Hinge



Surfacetech offers a hinge that allows modesty panels to automatically drop when a table moves into an upright position. Powerful magnets hold modesty panels 90 degrees to the work surface when in horizontal position. The magnets release automatically when the table moves into nesting position.

Metal Base

Metal Bases

Surfacetech metal bases are constructed of a column, base and a mounting plate in many styles and sizes. Surfacetech metal bases are available with adjustable glides or casters. Surfacetech's steel suppliers confirm the recycled content of their product can vary from 30 percent to 100 percent. Surfacetech bases are powder coated. Powder-coat paint emits zero Volatile Organic Compounds (VOCs) and any overspray in the process can be collected and reused leading to almost no waste of product.

Mounting Plates

Surfacetech mounting plates either are welded to the column or attached via rod. The majority of Surfacetech mounting plates are made of fabricated steel, are 6"x 8" and are a nominal .187" thick.

Columns

Surfacetech columns are constructed of 16 or 14 gauge tubular steel in a variety of shapes and diameters appropriate to the base style.

Base Feet and Discs

Surfacetech feet and discs are either welded to the column or attached via rod. Glides screwed into feet and discs allow for 3/4" vertical adjustment for leveling the table.

Surfacetech offers the following powder-coat finishes on metal bases:

Standard:

- Black

Grade 1:

- Black Wrinkle
- Silver
- Inner Tone
- Inner Tone Light
- Light Neutral
- Medium Tone

Grade 2

- Brown
- Graphite
- Champagne Metallic
- Graphite Metallic
- Silver Metallic

Fixed Metal Bases

Surfacetech fixed bases feature a heavy-gauge plate and, with the exception of seminar bases, are field installed into a pre-drilled position on the work surface with hardware provided. Fixed metal bases ship assembled.

Metal Bases



Folding/Nesting Metal Bases

Surfacetech folding/nesting bases feature a heavy-duty mechanism with an injection-molded housing, aluminum pivot, steel locking blade and rubber bumper pad. Nesting bases lock and release using a single-handle release mechanism. Casters come standard with nesting metal bases. Folding bases lock and release using a single lever. The folding/nesting mechanism ships unattached to the base, but is attached easily with four screws.



Post Leg Folding Metal Bases

Surfacetech uses a folding mechanism designed specifically for post leg bases. Folding post leg bases lock and release using a single lever. The folding mechanism is only available on 2" diameter legs.



Flip-Top Metal Bases

Surfacetech offers a fixed flip-top mechanism for metal disc and X-bases. The flip-top mechanisms allow tables to be flipped into a position parallel to the column.

Double Nester Mechanism



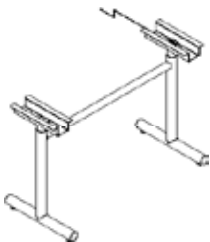
Surfacetech offers a nesting mechanism for double-column metal bases. The steel mounting plate for the mechanism is 5" x 11" x 1/4". Two 5-1/2" wide aluminum extrusions support the top and bases. The extrusion is available only in black. Two latch assemblies are used to latch the table in locked position. A lever arm is used to support top in released position. The mechanism is available on 60" diameter tops, 48" squares and 48" x 60" – 48" x 72" rectangles.

Turn to page 89 for pricing of the Double Nester Mechanism.



Spring Clip Height Adjustment

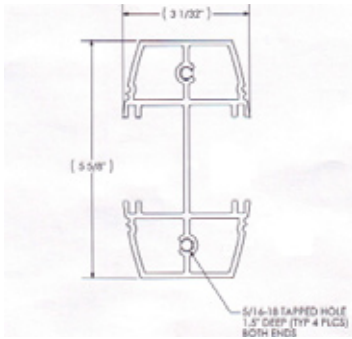
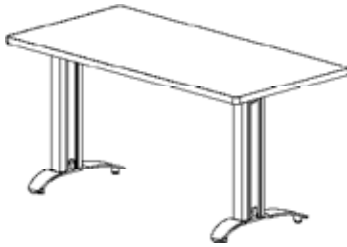
Surfacetech offers spring clip height adjustment on some metal bases. The spring clip allows for 9" of height adjustment from 26" to 35". Optional height ranges are available. Call 1-800-241-2982 for pricing.



Hand Crank/Electric Height Adjustment

Surfacetech offers hand crank and electric height adjustment on some metal bases. Call 1-800-241-2982 for availability and pricing.

Billboard Bases and Docking Station

**Billboard Base**

Surfacetech's Billboard leg consists of an aluminum extruded column attached by 5/16-18 x 1-1/4" zinc plated machine screws to a powder-coated cold-rolled steel foot. The aluminum extruded column is separated into six sections (see diagram) with the two center and larger sections portioned to run separated power and data wires through. The exterior and load bearing walls of the column are 1/8" thick. The interior walls are 1/8" thick. Two decorative inserts, .175" in thickness, slide into the slots on the outer portion of the column. Total height of the column is 24". Total weight is 7 pounds. The powder-coated cold rolled steel foot is bent using a forming tool and is .375" thick. Two 1-1/4" diameter pegs are welded on to the leg. The pegs accept adjustable glides or casters. Each Billboard foot weighs 10 pounds. A mounting plate made of 3/8" thick mild steel connects to the legs using 5/16-18 x 1 1/4" zinc plated machine screws. The plate, which is 6"x 9.5", connects to the table top. Total weight of the leg is 24 pounds.

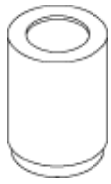
**Docking Station**

The Docking Station distributes power, data, and laptop storage to each user. It also offers a hardware system for CPU's and monitors and duals as a built-in modesty panel. The Docking Station is available in 36" (storage for one laptop) and 72" (storage for two laptops) width. Please visit www.surfacetech.com for a full specification guide.

ANSI/BIFMA

Surfacetech certifies all metal bases meet or exceed applicable ANSI/BIFMA standards and testing.

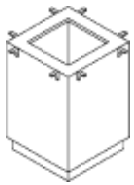
Laminate, veneer and wood bases



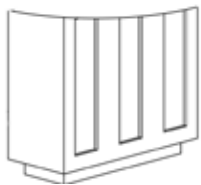
Cylinder & Half Cylinder Bases

Surfacetech cylinder bases are constructed with 1/4" thick fiber tubes. The tubes are wax free and are made from multiple layers of heavy-weight fiberboard. Surfacetech adheres laminate and veneer to the tubes using contact cement. It is the customer's responsibility to add a minimum 70 lbs. of sand or ballst during installation for stability. All laminate tubes are GREENGAURD® Certified.

Cube, End Panel and Rectangle Bases



Surfacetech uses Industrial, ANSI Grade M-2 Minimum, 1-1/8" and 3/4" thick particle board for construction of cube, end panel and rectangle bases. All particle board meets or exceeds ANSI standard A208.1-1999. All Surfacetech cores, the largest portion of its product, meet emission requirements for California Air Regulation Board Phase II. Surfacetech cores also are considered Environmentally Preferable Products (EPP) products by the Composite Panel Association. All EPP products must contain 100 percent recycled or recovered fiber content. Also, formaldehyde emissions from unfinished EPP particle board must be less than or equal to 0.18 ppm. Surfacetech cubes and rectangle bases are constructed using grooving and gluing methods for maximum strength. Surfacetech adheres laminate and veneer to the particle board cores using contact cement. All laminate cube, end panel and rectangle bases are GREENGAURD® Certified.



Palermo Bases

Surfacetech uses 3/4" veneer medium density fiberboard for construction of Palermo bases. The bases are constructed using 19mm RTA fasteners. Palermo bases are finished using Surfacetech's nine-step finishing process. Palermo bases are only available in veneer.

Insert options for Palermo bases include acrylic, laminate, metal laminate and veneer. A feature of the Palermo base is a silver laminate toe kick. Toe kick will be silver laminate

unless otherwise specified.



Wood Bases

Surfacetech uses solid wood legs and aprons for the Athens library furniture line. Wood legs and aprons are available in Cherry, Maple and Oak. Each leg is tapered with overall dimensions being 2-3/4" x 2-3/4" at the top of the leg and 1" x 1" at the bottom of the leg unless otherwise specified. Aprons are constructed using 25/32" thick x 3" wide lumber. Standard height for the wood legs is 29"

Custom heights are available. Call 1-800-241-2982 for pricing.

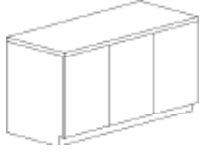
ANSI/BIFMA

Surfacetech certifies all laminate, veneer and wood bases meet or exceed applicable ANSI/BIFMA standards and testing.

Laminate and veneer casegoods

Laminate and Veneer Casegoods

Surfacetech uses Industrial, ANSI Grade M-2 Minimum, 1-1/8" and 3/4" thick particle board for construction of laminate and veneer casegoods. Many casegood components use particle board backed with black melamine. The melamine allows for a finished look on the interior of casegood products.



All particle board meets or exceeds ANSI standard A208.1-1999. All Surfacetech cores, the largest portion of its product, meet emission requirements for California Air Regulation Board Phase II. Surfacetech cores also are considered Environmentally Preferable Products (EPP) products by the Composite Panel Association. All EPP products must contain 100 percent recycled or recovered fiber content. Also, formaldehyde emissions from unfinished

EPP particle board must be less than or equal to 0.18 ppm. Surfacetech casegoods are constructed using grooving, gluing and screwing methods for maximum strength. Surfacetech adheres laminate and veneer to the particle board cores using contact cement. All laminate casegoods are GREENGAURD® Certified.

Options

Anti-Sag Bar



Surfacetech anti-sag bars are constructed of black powder-coated fabricated steel. Anti-sag bars attach to the bottom of work surfaces and are field installed into a pre-drilled position on the work surface with hardware provided. Surfacetech includes the price of an anti-sag bar on several of tables. Anti-sag bars typically are required when base spread exceeds 60".

CPU Holder



Surfacetech's CPU holder is made of steel with a black finish. The unit attaches directly to the table top and holds the CPU away from shoes, dust, moisture, vacuum cleaners or mops. The height adjustment on the unit is 13-3/8" – 20-1/2". The width adjustment on the unit is 5-1/2" to 9-1/4".

Other CPU holder units are available. Call 1-800-241-2982 for pricing and availability.

Flat Plate



Surfacetech uses a universal flat plate for joining work surfaces together. Flat plates attach to the bottom of work surfaces and are field installed into a pre-drilled position on the work surface with hardware provided. The plate is constructed of black powder-coated 1/8" thick steel. Standard flat plate dimensions are 3"x6". Standard flat plates have eight 3/16" diameter holes.

Casters – Locking and Non-locking



Surfacetech standard casters are 2" diameter twin-wheel casters. Wheels and hood are composed of black nylon. The hard wheel surface is particularly suitable for soft floor coverings such as carpets. Surfacetech casters come with various threads and stem lengths. Surfacetech casters are rated for 77 lbs each. Locking casters release and lock using a break pedal.

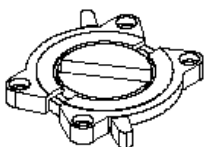
Other casters are available. Call 1-800-241-2982 for pricing and availability.

Grommets

Surfacetech offers a round and rectangle grommet. Round grommets have an outside diameter of 3" and an inside diameter of 2-3/4". Round grommets are composed of ABS thermoplastic. Round grommets have a textured cap. Rectangle grommets have an outside diameter of a nominal 2" x 4" and an inside diameter of a nominal 1.85" x 3.23". Rectangle grommets are composed of ABS thermoplastic. Rectangle grommets have a cap with four slots for wires. The cap is removable for large plugs.

Other grommets are available. Call 1-800-241-2982 for pricing and availability.

Mini-Table Locks

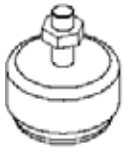


Surfacetech's unique self-leveling table locks provide a fast and easy way to link work surfaces. Two identical components attach to the bottom of work surfaces and are field installed into a pre-drilled position on the work surface with hardware provided. The diameter of the connector is 3-1/2". Work surfaces are locked together by simply twisting the locks into place. All locks come with a zinc finish.

Options

Click Catch Table Lock

Surfacetech's click catch table lock is the economical choice for locking tables together. Male and female components attach to the bottom of work surfaces and are field installed into a pre-drilled position on the work surface with hardware included. The male portion of the lock rotates 360 degrees with stops every 90 degrees. The components click together when locked. Overall dimension of the click catch lock is 2-1/4" x 6". All locks come with a zinc finish.

Self Adjusting Glides

Surfacetech offers automatic self adjusting glides to correct for uneven or irregular floors. Glides screw into the bottom of metal bases and are field installed. The glides automatically re-adjust up to 1/4" each time the table is moved. The glides are constructed of nylon and impact-resistant polypropylene combined with heat-treated stainless steel spring. Each glide has a load capacity of 125 lbs.

Table Carts

Surfacetech offers table carts for flat and upright storage. Flat stack carts have a 30" x 60" platform and are recommended for use with four to six rectangle tables with folding bases. The flat stack carts have large 6" x 2" wheels. The flat stack carts have a load capacity of 2,800 lbs. Upright storage carts have overall dimensions of 48" long, 33-3/4" wide and 47-1/2" high. The upright carts are recommended for use with four to six 48", 60" and 72" diameter tables. The upright carts have 5" x 2" wheels and come standard with two upright handle bars. The upright carts have a load capacity of 1,600 lbs.

Other table carts are available. Call 1-800-241-2982 for pricing and availability.

Wire Management – Under table

Surfacetech offers a four-channel, under-table wire management system. Under-table wire management units attach to the work surface with double-sided tape and are field installed. The four-channel system allows data and power wires to be separated, which is a requirement of many building codes. The under-table wire management unit is a co-extrusion with rigid sides and a softer top. In the center of each channel is a slot. The slots open and automatically close after use. Each channel is 3/4" x 5/8". All units are black.

Wire Management – Vertical

Surfacetech offers a vertical wire management trough that allows users to run the power and data vertically up table legs and bases. The units attach to round and square table legs and bases with double-sided tape and are field installed. The units are constructed of extruded PVC. The units are 22" in length and are offered in either silver or black. **Other wire management options are available. Call 1-800-241-2982 for pricing and availability.**

Power Options

Interact



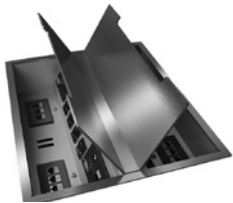
The Interact (formerly the PBL/PSL) is a two-power, table trough unit sold with two data jacks. Voice and other jacks are available. The Interact unit comes in a black or silver finish standard. Other finishes are available. The Interact has overall dimensions of 5.34" x 8.98" and is composed of powder-coated steel. The unit is field installed into a pre-routed cutout in the work surface. The Interact unit has a lid that covers plugs and jacks and can be closed during use. The Interact unit is UL Listed and is sold with a 72" 15-amp cord. The Interact includes a convenience plug, which allows separate units to be plugged into one another. Non-sequential power connectivity and hardwire versions are available.

Interface



The Interface is a four-power, table trough unit sold with four data jacks. Voice and other jacks are available. The Interface unit comes in a black or silver finish standard. Other finishes are available. The Interface has overall dimensions of 6.68" x 14.27" and is composed of powder-coated steel. The unit is field installed into a pre-routed cutout in the work surface. The Interface unit has a lid that covers plugs and jacks and can be closed during use. The Interface unit is UL Listed and is sold with a 72" 15-amp cord. Non-sequential connectivity versions are available.

Interface II



The Interface II is a double-sided table trough unit. Each side is sold with four-power and four data jacks. Voice and other jacks are available. The Interface II unit comes in a black or silver finish standard. Other finishes are available. The Interface II has overall dimensions of 11.46" x 14.27" and is composed of powder-coated steel. The unit is field installed into a pre-routed cutout. The Interface unit has a lid on each side that covers plugs and jacks and can be closed during use. The Interface unit is UL Listed and is sold with a 72" 15-amp cord. Non-sequential connectivity versions are available.

M2X



The M2X unit is a double-sided pop-up unit. Each side is sold with two power and a two data/voice adapter kit. Voice and other jacks are sold separately with this unit. Silver is the standard finish on the M2X. Other finishes are available. The M2X has overall dimensions of 8-1/16" x 8-5/16" and is constructed of anodized aluminum. The unit is field installed into a pre-routed cutout in the work surface. The M2X unit has one-touch pop-up doors on each side and remains open during use. The M2X is UL Listed and is sold with a 72" 15-amp cord. Sequential-power connectivity and hardwire versions are available.

MHO



The MHO unit is a two power pop-up unit sold with a two data/voice adapter kit. Voice, data and other jacks are sold separately with this unit. Silver is the standard finish on the MHO. Other finishes are available. The MHO unit has overall dimensions of 4-7/16" x 8-5/16" and is constructed of anodized aluminum. The unit is field installed into a pre-routed cutout in the work surface. The MHO unit has a one-touch pop-up door and remains open during use. The MHO unit is UL Listed and is sold with a 72" 15-amp cord. Sequential-power connectivity and hardwire versions are available.

Power Options

MHO2



The MHO2 unit is a three power pop-up unit sold with a four data/voice adapter kit. Voice, data and other jacks are sold separately with this unit. Silver is the standard finish on the MHO2. Other finishes are available. The MHO2 unit has overall dimensions of 7-9/16" x 12-13/16" and is constructed of anodized aluminum. The unit is field installed into a pre-routed cutout in the work surface. The MHO2's retractable convenience plugs are designed with one touch double doors that function as cable management portals that close while in use. The MHO unit is UL Listed and is sold with a 72" 15-amp cord. Sequential-power connectivity and hardwire versions are available.

Miniport



The miniport is an economical two power pop-up unit sold with a two data/voice adapter kit. Voice, data and other jacks are sold separately with this unit. The miniport unit comes in a black or silver finish standard. Other finishes are available. The miniport unit has overall dimensions of 3" x 7". The unit is field installed into a pre-routed cutout in the work surface. The miniport unit has a one-touch pop-up door and remains open during use. The miniport is UL Listed and is sold with a 72" 15-amp cord. Hardwire versions are available.

Seclusion



The Seclusion is a flexible unit that can be sold with one, two or three power as well as one, two or three data. The unit can be clamped to a work surface edge or mounted underneath the table. The seclusion is sold with two power and two data jacks standard as either a under-table or clamp-on unit. Voice and other jacks are available. The Seclusion unit comes in a black or silver finish standard. Other finishes are not available. Overall dimensions of the Seclusion vary. The unit is composed of powder-coated steel. The unit attaches to the bottom of work surfaces and is field installed into a pre-drilled position on the work surface with hardware provided. The Seclusion is UL Listed and is sold with a 72" 15-amp cord. Non-sequential connectivity versions are available.

Villa



The Villa is a flexible two-part power data system consisting of a power base which is mounted beneath the work surface and a selection of grommets allowing customization of the table top. The unit comes standard with a flush-style grommet and either two power or two power and two data jacks. Other grommets as well as voice and other jacks are available. The Villa unit comes in a black or silver finish standard. Other finishes are not available. Overall dimensions of the Villa unit vary. The unit is composed of powder-coated steel. The power unit attaches to the bottom of work surfaces and is field installed into a pre-drilled position on the work surface with hardware provided. The grommet is field installed into a pre-routed cutout in the work surface. The Villa is UL Listed and is sold with a 72" 15-amp cord. Non-sequential connectivity and hardwire versions are available.

Connectivity Options

4-Trac

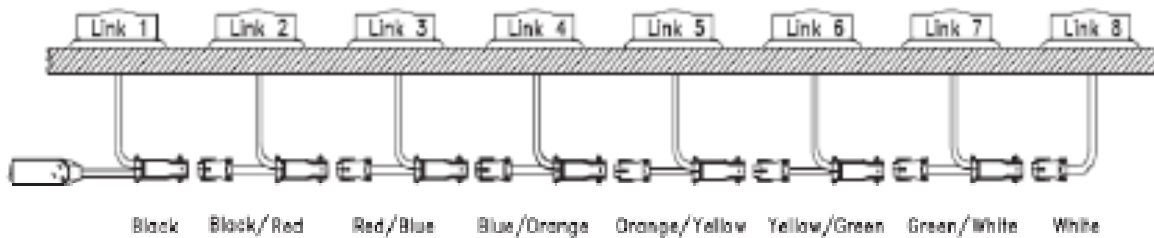


The 4-Trac is a 4-wire, 2-circuit, under-table, power system. The 4-Trac system is sold in kits of various sizes depending on work surface length. The system is highly customizable. Call Surfacetech with requirements and Surfacetech will provide correct configuration. The system can load up to 13 duplexes per circuit or 26 – 15 amp duplex receptacles per hardwire in-feed and 8 duplexes per softwire in-feed. Overall dimensions of the unit vary. The system is field installed. The 4-Trac system is UL Listed.

Sequential Power

The sequential power system allows one power unit to be connected to another in a situation where limited power in-feeds are available. The sequential power is a single circuit system and has a 12 amp rating. Up to 8 devices can be connected and **MUST BE CONNECTED IN SEQUENCE**. The power system has a maximum length of 40'. Overall dimensions of the systems vary. The system is field installed and UL Listed. Hardwire and 15-amp power starter cables are available.

The sequential power system is available with M2X, MHO, MHO2 and Miniport units.



Non-sequential power



Surfacetech non-sequential power systems are designed for training rooms where multiple configurations of tables are expected. The non-sequential power systems provide a convenient way to link multiple units together from one power in-feed. The non-sequential feature eliminates the need of placing tables back in color coded or numerical sequence. The non-sequential power system is offered in an 8-wire, 4 circuit option and a 4-wire, 2-circuit option. The number of devices able to be connected varies depending on device. The system is field installed and UL Listed. Hardwire and 15-amp power starter cables are available.

The non-sequential power system is available with the Interact, Interface I, Interface II, Seclusion and Villa power units.

SEQUENTIAL AND NON-SEQUENTIAL POWER PRICING IS AVAILABLE BY CUSTOM QUOTE ONLY.

Base Placement

Training

Bases in training position are set as far apart as possible while maintaining structural integrity. This placement is usually meant for people sitting on one side of the table. Training position is assumed for all tables in the "Training and Meeting Tables" section of this book unless otherwise specified.

MEETING

Bases in meeting position are set closer together to allow for seating around all sides of the table.

BASE DISTANCE CHARTS

metal training base distances		metal meeting base distances		end panel base distances		cylinder, cube and rectangle base distances	
table length	base distance	table length	base distance	table length	base distance	table length	base distance
60"	52"	60"	30"	60"	36"	72"	36"
72"	64"	72"	36"	72"	36"	84"	42"
84"	76"	84"	42"	84"	48"	96"	48"
96"	88"	96"	48"	96"	60"	108"	54"
		108"	54"	108"	60"	120"	60"
		120"	60"	120"	72"	132"	39"
		108"	36"	132"	48"	144"	45"
		120"	40"	144"	48"	168"	56"
		144"	48"	168"	60"	192"	64"
		168"	42"	192"	72"	216"	72"
		192"	48"	216"	48"	240"	60"
		216"	54"	240"	60"	264"	66"
		240"	40"	264"	72"	288"	54"
		264"	44"	288"	84"		
		288"	48"				

half cylinder base distances	
table length	base distance
132"	39"
144"	43"
168"	51"
192"	59"
216"	51"
240"	58"
264"	66"
288"	55"

SEATING CHARTS

circle		square	
table size	seats	table size	seats
24"	2	24"	2
30"	4	30"	4
36"	4	36"	4
42"	4	42"	4
48"	4	48"	4
54"	4	54"	8
60"	5	60"	8
72"	7		
84"	8		
96"	10		

rectangle / boat / racetrack / tele-wedge							
table size	seats	table size	seats	table size	seats	table size	seats
24x30	4	30x84	6	48x84	6	60x144	12
24x36	4	30x96	8	48x96	8	60x192	14
24x48	4	30x120	8	48x108	8	60x240	18
24x60	4	36x36	4	48x120	10	60x288	20
24x72	4	36x48	4	48x144	12		
24x84	6	36x60	6	48x192	14		
24x96	6	36x72	6	48x240	48		
30x36	4	36x84	6	48x288	20		
30x48	4	36x96	8	60x96	8		
30x60	6	36x120	8	60x108	8		
30x72	6	48x72	6	60x120	10		

GROMMET LOCATION CODES

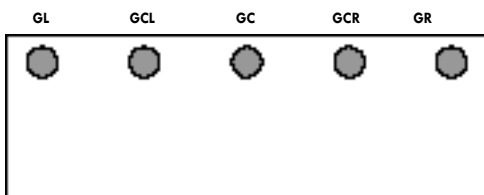


TABLE LOCK LOCATION CODES

One set consists of two locks.

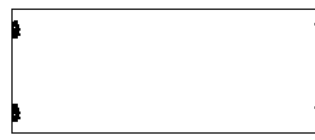


Table Lock Location A-B

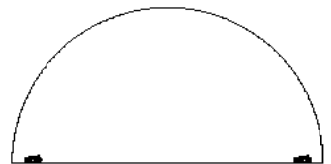


Table Lock Location E-F

TRAINING TABLE POWER LOCATION CODES

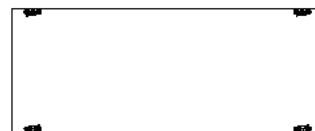
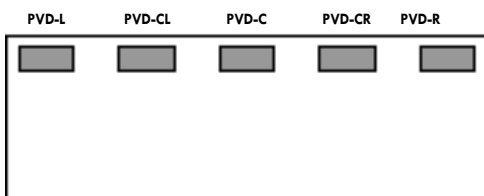


Table Lock Location C-D

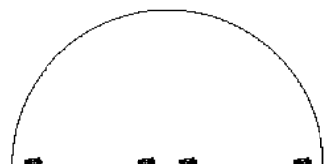


Table Lock Location G-H

CONFERENCE TABLE POWER LOCATION CODES

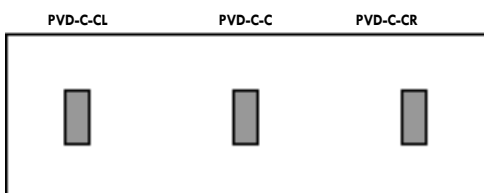


Table Lock Location A-B/C-D



Table Lock Location G-H

THIS PAGE LEFT INTENTIONALLY BLANK